

CD298 Polyclonal Antibody

Catalog # AP73806

Product Information

Application	WB, E
Primary Accession	P54709
Reactivity	Human, Rat, Mouse
Host	Rabbit
Clonality	Polyclonal
Calculated MW	31513

Additional Information

Gene ID	483
Other Names	ATP1B3; Sodium/potassium-transporting ATPase subunit beta-3; Sodium/potassium-dependent ATPase subunit beta-3; ATPB-3; CD298
Dilution	WB~~Western Blot: 1/500 - 1/2000. ELISA: 1/10000. Not yet tested in other applications. E~~N/A
Format	Liquid in PBS containing 50% glycerol, 0.5% BSA and 0.09% (W/V) sodium azide.
Storage Conditions	-20°C

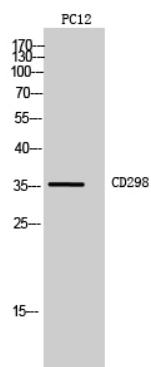
Protein Information

Name	ATP1B3
Function	This is the non-catalytic component of the active enzyme, which catalyzes the hydrolysis of ATP coupled with the exchange of Na(+) and K(+) ions across the plasma membrane. The exact function of the beta-3 subunit is not known.
Cellular Location	Apical cell membrane {ECO:0000250 UniProtKB:Q63377}; Single-pass type II membrane protein. Basolateral cell membrane {ECO:0000250 UniProtKB:Q63377}; Single-pass type II membrane protein. Melanosome Note=Identified by mass spectrometry in melanosome fractions from stage I to stage IV

Background

This is the non-catalytic component of the active enzyme, which catalyzes the hydrolysis of ATP coupled with the exchange of Na(+) and K(+) ions across the plasma membrane. The exact function of the beta-3 subunit is not known.

Images



Western Blot analysis of PC12, NIH-3T3 cells using CD298 Polyclonal Antibody.. Secondary antibody was diluted at 1:20000

Please note: All products are 'FOR RESEARCH USE ONLY. NOT FOR USE IN DIAGNOSTIC OR THERAPEUTIC PROCEDURES'.