

CD244 Polyclonal Antibody

Catalog # AP73798

Product Information

Application	WB, IHC-P, IF, ICC, E
Primary Accession	Q9BZW8
Reactivity	Human, Rat, Mouse
Host	Rabbit
Clonality	Polyclonal

Additional Information

Other Names	CD244; 2B4; Natural killer cell receptor 2B4; NK cell activation-inducing ligand; NAIL; NK cell type I receptor protein 2B4; NKR2B4; h2B4; CD244
Dilution	WB~Western Blot: 1/500 - 1/2000. IHC-p: 1:100-1:300. ELISA: 1/10000. Not yet tested in other applications. IHC-P~Western Blot: 1/500 - 1/2000. IHC-p: 1:100-1:300. ELISA: 1/10000. Not yet tested in other applications. IF~1:50~200 ICC~N/A E~N/A
Format	Liquid in PBS containing 50% glycerol, 0.5% BSA and 0.09% (W/V) sodium azide.
Storage Conditions	-20°C

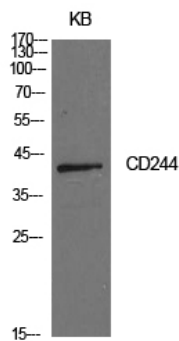
Protein Information

Background

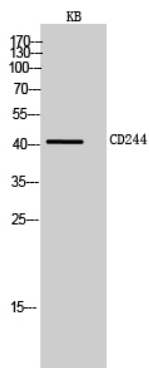
Heterophilic receptor of the signaling lymphocytic activation molecule (SLAM) family; its ligand is CD48. SLAM receptors triggered by homo- or heterotypic cell-cell interactions are modulating the activation and differentiation of a wide variety of immune cells and thus are involved in the regulation and interconnection of both innate and adaptive immune response. Activities are controlled by presence or absence of small cytoplasmic adapter proteins, SH2D1A/SAP and/or SH2D1B/EAT-2. Acts as activating natural killer (NK) cell receptor (PubMed:[10359122](#), PubMed:[8376943](#), PubMed:[11714776](#)). Activating function implicates association with SH2D1A and FYN (PubMed:[15713798](#)). Downstreaming signaling involves predominantly VAV1, and, to a lesser degree, INPP5D/SHIP1 and CBL. Signal attenuation in the absence of SH2D1A is proposed to be dependent on INPP5D and to a lesser extent PTPN6/SHP-1 and PTPN11/SHP-2 (PubMed:[10934222](#), PubMed:[15713798](#)). Stimulates NK cell cytotoxicity, production of IFN-gamma and granule exocytosis (PubMed:[8376943](#), PubMed:[11714776](#)). Optimal expansion and activation of NK cells seems to be dependent on the engagement of CD244 with CD48 expressed on neighboring NK cells (By similarity). Acts as costimulator in NK activation by enhancing signals by other NK receptors such as NCR3 and NCR1 (PubMed:[10741393](#)). At early stages of NK cell differentiation may function as an inhibitory receptor possibly ensuring the self- tolerance of developing NK cells (PubMed:[11917118](#)). Involved in the regulation of CD8(+) T-cell proliferation; expression on activated T-cells and binding to CD488 provides

costimulatory-like function for neighboring T-cells (By similarity). Inhibits inflammatory responses in dendritic cells (DCs) (By similarity).

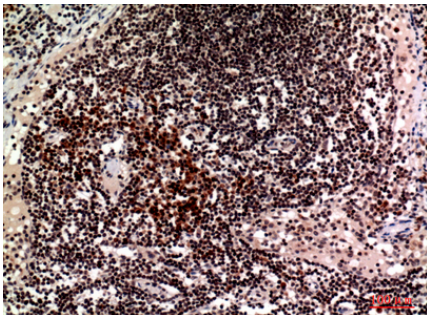
Images



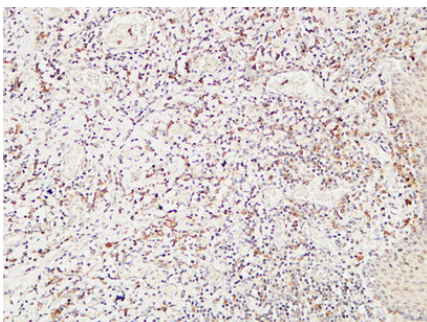
Western Blot analysis of KB cells using CD244 Polyclonal Antibody.. Secondary antibody was diluted at 1:20000



Western Blot analysis of KB cells using CD244 Polyclonal Antibody. Secondary antibody was diluted at 1:20000

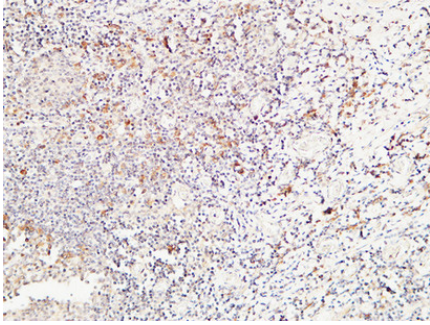
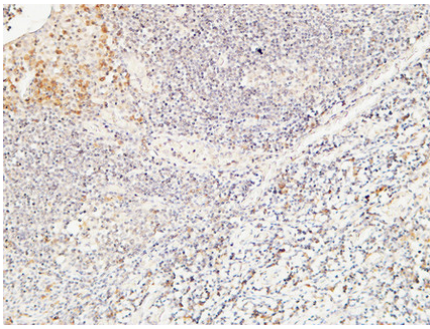


Immunohistochemical analysis of paraffin-embedded human-lymph, antibody was diluted at 1:100



Immunohistochemical analysis of paraffin-embedded Human Amygdala. 1, Antibody was diluted at 1:200(4°,overnight). 2, High-pressure and temperature EDTA, pH8.0 was used for antigen retrieval. 3,Secondary antibody was diluted at 1:200(room temperature, 30min).

Immunohistochemical analysis of paraffin-embedded Human Amygdala. 1, Antibody was diluted at 1:200(4°,overnight). 2, High-pressure and temperature EDTA, pH8.0 was used for antigen retrieval. 3,Secondary antibody was diluted at 1:200(room temperature, 30min).



Immunohistochemical analysis of paraffin-embedded Human Amygdala. 1, Antibody was diluted at 1:200(4°,overnight). 2, High-pressure and temperature EDTA, pH8.0 was used for antigen retrieval. 3,Secondary antibody was diluted at 1:200(room temperature, 30min).

Please note: All products are 'FOR RESEARCH USE ONLY. NOT FOR USE IN DIAGNOSTIC OR THERAPEUTIC PROCEDURES'.