

# IL-7R Polyclonal Antibody

Catalog # AP73788

## Product Information

---

<b>Application</b>	WB
<b>Primary Accession</b>	<a href="#">P16871</a>
<b>Reactivity</b>	Human
<b>Host</b>	Rabbit
<b>Clonality</b>	Polyclonal
<b>Calculated MW</b>	51579

## Additional Information

---

<b>Gene ID</b>	3575
<b>Other Names</b>	IL7R; Interleukin-7 receptor subunit alpha; IL-7 receptor subunit alpha; IL-7R subunit alpha; IL-7R-alpha; IL-7RA; CDw127; CD127
<b>Dilution</b>	WB~~Western Blot: 1/500 - 1/2000. ELISA: 1/10000. Not yet tested in other applications.
<b>Format</b>	Liquid in PBS containing 50% glycerol, 0.5% BSA and 0.09% (W/V) sodium azide.
<b>Storage Conditions</b>	-20°C

## Protein Information

---

<b>Name</b>	IL7R
<b>Function</b>	Receptor for interleukin-7. Also acts as a receptor for thymic stromal lymphopoietin (TSLP).
<b>Cellular Location</b>	[Isoform 1]: Cell membrane; Single-pass type I membrane protein [Isoform 4]: Secreted.

## Background

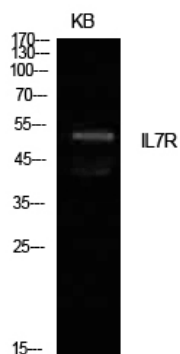
---

Receptor for interleukin-7. Also acts as a receptor for thymic stromal lymphopoietin (TSLP).

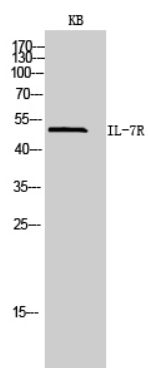
## Images

---

Western Blot analysis of KB cells using IL-7R Polyclonal Antibody.. Secondary antibody was diluted at 1:20000



Western Blot analysis of KB cells using IL-7R Polyclonal Antibody. Secondary antibody was diluted at 1:20000



Please note: All products are 'FOR RESEARCH USE ONLY. NOT FOR USE IN DIAGNOSTIC OR THERAPEUTIC PROCEDURES'.