

CD21 Polyclonal Antibody

Catalog # AP73765

Product Information

Application	WB, IHC-P, IF, ICC, E
Primary Accession	P20023
Reactivity	Human, Rat, Mouse
Host	Rabbit
Clonality	Polyclonal
Calculated MW	112916

Additional Information

Gene ID	1380
Other Names	CR2; C3DR; Complement receptor type 2; Cr2; Complement C3d receptor; Epstein-Barr virus receptor; EBV receptor; CD21
Dilution	WB--Western Blot: 1/500 - 1/2000. IHC-p: 1:100-1:300. ELISA: 1/10000. Not yet tested in other applications. IHC-P--Western Blot: 1/500 - 1/2000. IHC-p: 1:100-1:300. ELISA: 1/10000. Not yet tested in other applications. IF--1:50~200 ICC--N/A E--N/A
Format	Liquid in PBS containing 50% glycerol, 0.5% BSA and 0.09% (W/V) sodium azide.
Storage Conditions	-20°C

Protein Information

Name	CR2
Synonyms	C3DR
Function	Serves as a receptor for various ligands including complement component CD3d, HNRNPU OR IFNA1 (PubMed: 1849076 , PubMed: 21527715 , PubMed: 7753047). When C3d is bound to antigens, attaches to C3d on B-cell surface and thereby facilitates the recognition and uptake of antigens by B-cells (PubMed: 21527715). This interaction enhances B-cell activation and subsequent immune responses. Forms a complex with several partners on the surface of B-cells including CD19, FCRL5 and CD81, to form the B-cell coreceptor complex that plays a crucial role in B-cell activation and signaling (PubMed: 1383329 , PubMed: 30107486). Also induces specific intracellular signaling separately from the BCR and CD19 by activating the tyrosine kinase SRC, which then phosphorylates nucleolin/NCL and triggers AKT and GSK3 kinase activities in a SYK/CD19-independent manner (PubMed: 12938232). Acts as a ligand for CD23 (FcεpsilonRII), a low-affinity receptor for IgE, which is

expressed on B-cells and other immune cells, and thus participates in the regulation of IgE production (PubMed:[1386409](#)).

Cellular Location

Cell membrane; Single-pass type I membrane protein

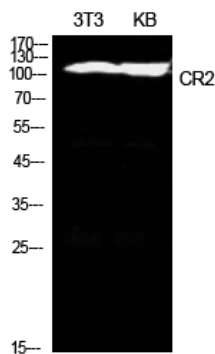
Tissue Location

Mature B-lymphocytes, T-lymphocytes, pharyngeal epithelial cells, astrocytes and follicular dendritic cells of the spleen

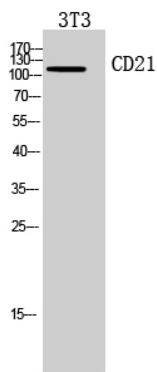
Background

Receptor for complement C3, for the Epstein-Barr virus on human B-cells and T-cells and for HNRNPU (PubMed:[7753047](#)). Participates in B lymphocytes activation (PubMed:[7753047](#)).

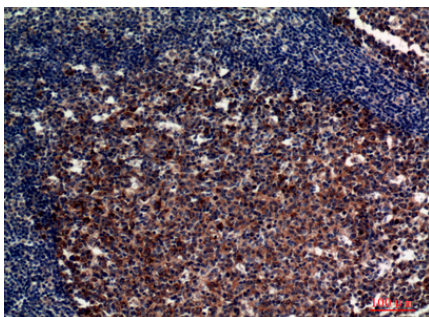
Images



Western Blot analysis of NIH-3T3, KB cells using CD21 Polyclonal Antibody.. Secondary antibody was diluted at 1:20000



Western Blot analysis of 3T3 cells using CD21 Polyclonal Antibody. Secondary antibody was diluted at 1:20000



Immunohistochemical analysis of paraffin-embedded human-tonsils, antibody was diluted at 1:100

Please note: All products are 'FOR RESEARCH USE ONLY. NOT FOR USE IN DIAGNOSTIC OR THERAPEUTIC PROCEDURES'.