

# Integrin $\alpha$ L Polyclonal Antibody

Catalog # AP73761

## Product Information

Application	WB, E
Primary Accession	<a href="#">P20701</a>
Reactivity	Human, Rat, Mouse
Host	Rabbit
Clonality	Polyclonal
Calculated MW	128770

## Additional Information

Gene ID	3683
Other Names	ITGAL; CD11A; Integrin alpha-L; CD11 antigen-like family member A; Leukocyte adhesion glycoprotein LFA-1 alpha chain; LFA-1A; Leukocyte function-associated molecule 1 alpha chain; CD11a
Dilution	WB~~Western Blot: 1/500 - 1/2000. ELISA: 1/10000. Not yet tested in other applications. E~~N/A
Format	Liquid in PBS containing 50% glycerol, 0.5% BSA and 0.09% (W/V) sodium azide.
Storage Conditions	-20°C

## Protein Information

Name	ITGAL ( <a href="#">HGNC:6148</a> )
Synonyms	CD11A
Function	<p>Integrin ITGAL/ITGB2 is a receptor for ICAM1, ICAM2, ICAM3 and ICAM4. Integrin ITGAL/ITGB2 is a receptor for F11R (PubMed:<a href="#">11812992</a>, PubMed:<a href="#">15528364</a>). Integrin ITGAL/ITGB2 is a receptor for the secreted form of ubiquitin-like protein ISG15; the interaction is mediated by ITGAL (PubMed:<a href="#">29100055</a>). Involved in a variety of immune phenomena including leukocyte-endothelial cell interaction, cytotoxic T-cell mediated killing, and antibody dependent killing by granulocytes and monocytes. Contributes to natural killer cell cytotoxicity (PubMed:<a href="#">15356110</a>). Involved in leukocyte adhesion and transmigration of leukocytes including T-cells and neutrophils (PubMed:<a href="#">11812992</a>). Acts as a platform at the immunological synapse to translate TCR engagement and density of the ITGAL ligand ICAM1 into graded adhesion (PubMed:<a href="#">38195629</a>). Required for generation of common lymphoid progenitor cells in bone marrow, indicating a role in lymphopoiesis (By similarity). Integrin ITGAL/ITGB2 in association with ICAM3, contributes to</p>

apoptotic neutrophil phagocytosis by macrophages (PubMed:[23775590](#)).

**Cellular Location**

Cell membrane; Single-pass type I membrane protein. Note=Upon antigen recognition by the TCR, is recruited to lipid rafts (PubMed:15684041).

**Tissue Location**

Leukocytes.

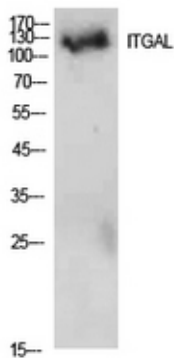
## Background

---

Integrin alpha-L/beta-2 is a receptor for ICAM1, ICAM2, ICAM3 and ICAM4. Integrin alpha-L/beta-2 is also a receptor for F11R (PubMed:[11812992](#), PubMed:[15528364](#)). Involved in a variety of immune phenomena including leukocyte-endothelial cell interaction, cytotoxic T-cell mediated killing, and antibody dependent killing by granulocytes and monocytes. Contributes to natural killer cell cytotoxicity (PubMed:[15356110](#)). Involved in leukocyte adhesion and transmigration of leukocytes including T-cells and neutrophils (PubMed:[11812992](#)). Required for generation of common lymphoid progenitor cells in bone marrow, indicating a role in lymphopoiesis (By similarity). Integrin alpha-L/beta-2 in association with ICAM3, contributes to apoptotic neutrophil phagocytosis by macrophages (PubMed:[23775590](#)).

## Images

---



Western Blot analysis of 293 cells using Integrin αL Polyclonal Antibody.. Secondary antibody was diluted at 1:20000

Please note: All products are 'FOR RESEARCH USE ONLY. NOT FOR USE IN DIAGNOSTIC OR THERAPEUTIC PROCEDURES'.