

Talin-1 Polyclonal Antibody

Catalog # AP73759

Product Information

Application	WB, IHC-P, IF, ICC, E
Primary Accession	Q9Y490
Reactivity	Human, Mouse, Rat
Host	Rabbit
Clonality	Polyclonal
Calculated MW	269767

Additional Information

Gene ID	7094
Other Names	TLN1; KIAA1027; TLN; Talin-1
Dilution	WB~~Western Blot: 1/500 - 1/2000. IHC-p: 1:100-1:300. ELISA: 1/10000. Not yet tested in other applications. IHC-P~~Western Blot: 1/500 - 1/2000. IHC-p: 1:100-1:300. ELISA: 1/10000. Not yet tested in other applications. IF~~1:50~200 ICC~~N/A E~~N/A
Format	Liquid in PBS containing 50% glycerol, 0.5% BSA and 0.09% (W/V) sodium azide.
Storage Conditions	-20°C

Protein Information

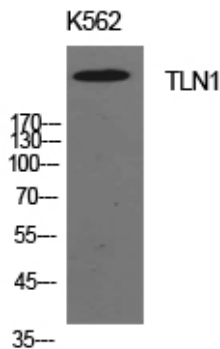
Name	TLN1
Synonyms	KIAA1027, TLN
Function	High molecular weight cytoskeletal protein concentrated at regions of cell-matrix and cell-cell contacts. Involved in connections of major cytoskeletal structures to the plasma membrane. With KANK1 co-organize the assembly of cortical microtubule stabilizing complexes (CMSCs) positioned to control microtubule-actin crosstalk at focal adhesions (FAs) rims.
Cellular Location	Cell projection, ruffle membrane; Peripheral membrane protein; Cytoplasmic side. Cytoplasm, cytoskeleton. Cell surface {ECO:0000250 UniProtKB:P26039}. Cell junction, focal adhesion {ECO:0000250 UniProtKB:P26039}. Note=Colocalizes with LAYN at the membrane ruffles. Localized preferentially in focal adhesions than fibrillar adhesions (By similarity).
Tissue Location	[Isoform 2]: Expressed at low to non-detectable levels in many tissues but highly expressed in skin and pancreas with other tissues including kidney

cortex, endocervix, testis, pituitary, liver, and spleen also showing robust expression

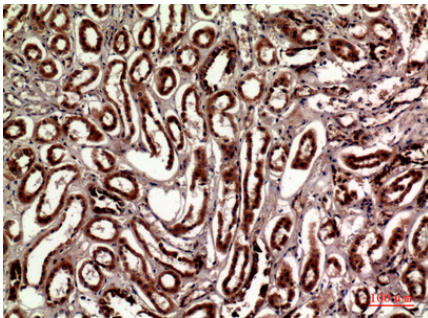
Background

Probably involved in connections of major cytoskeletal structures to the plasma membrane. High molecular weight cytoskeletal protein concentrated at regions of cell-substratum contact and, in lymphocytes, at cell-cell contacts (By similarity).

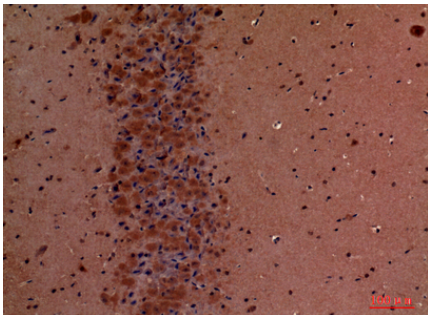
Images



Western Blot analysis of K562 cells using Talin-1 Polyclonal Antibody. Antibody was diluted at 1:1000. Secondary antibody was diluted at 1:20000



Immunohistochemical analysis of paraffin-embedded human-kidney, antibody was diluted at 1:100



Immunohistochemical analysis of paraffin-embedded mouse-brain, antibody was diluted at 1:100

Please note: All products are 'FOR RESEARCH USE ONLY. NOT FOR USE IN DIAGNOSTIC OR THERAPEUTIC PROCEDURES'.