

# GHR Polyclonal Antibody

Catalog # AP73756

## Product Information

---

Application	WB
Primary Accession	<a href="#">P10912</a>
Reactivity	Human, Mouse, Rat
Host	Rabbit
Clonality	Polyclonal
Calculated MW	71500

## Additional Information

---

Gene ID	2690
Other Names	GHR; Growth hormone receptor; GH receptor; Somatotropin receptor
Dilution	WB~~Western Blot: 1/500 - 1/2000. ELISA: 1/10000. Not yet tested in other applications.
Format	Liquid in PBS containing 50% glycerol, 0.5% BSA and 0.09% (W/V) sodium azide.
Storage Conditions	-20°C

## Protein Information

---

Name	GHR
Function	Receptor for pituitary gland growth hormone (GH1) involved in regulating postnatal body growth (PubMed: <a href="#">1549776</a> , PubMed: <a href="#">2825030</a> , PubMed: <a href="#">8943276</a> ). On ligand binding, couples to the JAK2/STAT5 pathway (PubMed: <a href="#">1549776</a> , PubMed: <a href="#">15690087</a> , PubMed: <a href="#">2825030</a> , PubMed: <a href="#">8943276</a> ).
Cellular Location	Cell membrane; Single-pass type I membrane protein. Note=On growth hormone binding, GHR is ubiquitinated, internalized, down-regulated and transported into a degradative or non-degradative pathway {ECO:0000250 UniProtKB:P19941} [Growth hormone-binding protein]: Secreted. Note=Complexed to a substantial fraction of circulating GH.
Tissue Location	Expressed in various tissues with high expression in liver and skeletal muscle. [Isoform 4]: Predominantly expressed in kidney, bladder, adrenal gland and brain stem (PubMed:1569971). Highly expressed in placental villi (PubMed:1569971, PubMed:8360189)

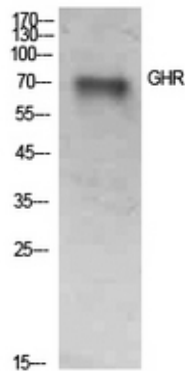
## Background

---

Receptor for pituitary gland growth hormone involved in regulating postnatal body growth. On ligand binding, couples to the JAK2/STAT5 pathway (By similarity). Isoform 2 up-regulates the production of GHBP and acts as a negative inhibitor of GH signaling.

## Images

---



Western Blot analysis of SKOV3 cells using GHR Polyclonal Antibody.. Secondary antibody was diluted at 1:20000

Please note: All products are 'FOR RESEARCH USE ONLY. NOT FOR USE IN DIAGNOSTIC OR THERAPEUTIC PROCEDURES'.