

# Stra8 Polyclonal Antibody

Catalog # AP73740

## Product Information

---

Application	WB
Primary Accession	<a href="#">Q7Z7C7</a>
Reactivity	Human
Host	Rabbit
Clonality	Polyclonal
Calculated MW	36908

## Additional Information

---

Gene ID	346673
Other Names	STRA8; Stimulated by retinoic acid gene 8 protein homolog
Dilution	WB~~Western Blot: 1/500 - 1/2000. ELISA: 1/10000. Not yet tested in other applications.
Format	Liquid in PBS containing 50% glycerol, 0.5% BSA and 0.09% (W/V) sodium azide.
Storage Conditions	-20°C

## Protein Information

---

Name	STRA8 ( <a href="#">HGNC:30653</a> )
Function	Meiosis-inducer required for the transition into meiosis for both female and male germ cells. In female germ cells, acts downstream of ZGLP1 as a key effector of the meiotic program: required for premeiotic DNA replication and subsequent events in meiotic prophase. During spermatogenesis, next to its role in meiotic initiation, promotes (but is not required for) spermatogonial differentiation. In complex with MEIOSIN, directly activates the transcription of a subset of critical meiotic genes playing a central role in cell-cycle switching from mitosis to meiosis.
Cellular Location	Cytoplasm {ECO:0000250 UniProtKB:P70278}. Nucleus {ECO:0000250 UniProtKB:P70278}. Note=Shuttles between nucleus and cytoplasm. Nuclear export is XPO1-dependent {ECO:0000250 UniProtKB:P70278}
Tissue Location	Expressed specifically in testis and fetal ovaries.

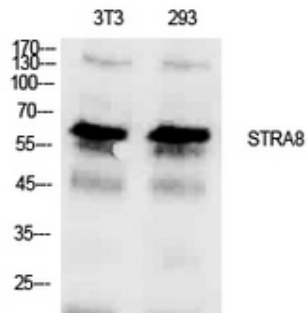
## Background

---

Meiosis-inducer required for the transition into meiosis for both female and male germ cells. In female germ cells, required for premeiotic DNA replication and subsequent events in meiotic prophase. During spermatogenesis, next to its role in meiotic initiation, promotes (but is not required for) spermatogonial differentiation. Can associate with DNA (possibly in an indirect manner), and in vitro can activate DNA transcription (By similarity).

## Images

---



Western Blot analysis of NIH-3T3, 293 cells using Stra8 Polyclonal Antibody. Antibody was diluted at 1:1000. Secondary antibody was diluted at 1:20000

Please note: All products are 'FOR RESEARCH USE ONLY. NOT FOR USE IN DIAGNOSTIC OR THERAPEUTIC PROCEDURES'.