

# FTH1 Antibody (C-term)

Affinity Purified Rabbit Polyclonal Antibody (Pab)

Catalog # AP7370b

## Product Information

---

<b>Application</b>	WB, E
<b>Primary Accession</b>	<a href="#">P02794</a>
<b>Reactivity</b>	Human
<b>Host</b>	Rabbit
<b>Clonality</b>	Polyclonal
<b>Isotype</b>	Rabbit IgG
<b>Clone Names</b>	RB19438
<b>Calculated MW</b>	21226
<b>Antigen Region</b>	153-180

## Additional Information

---

<b>Gene ID</b>	2495
<b>Other Names</b>	Ferritin heavy chain, Ferritin H subunit, Cell proliferation-inducing gene 15 protein, Ferritin heavy chain, N-terminally processed, FTH1, FTH, FTHL6
<b>Target/Specificity</b>	This FRIH antibody is generated from rabbits immunized with a KLH conjugated synthetic peptide between 153-180 amino acids from the C-terminal region of human FRIH.
<b>Dilution</b>	WB~~1:1000 E~~Use at an assay dependent concentration.
<b>Format</b>	Purified polyclonal antibody supplied in PBS with 0.09% (W/V) sodium azide. This antibody is purified through a protein A column, followed by peptide affinity purification.
<b>Storage</b>	Maintain refrigerated at 2-8°C for up to 2 weeks. For long term storage store at -20°C in small aliquots to prevent freeze-thaw cycles.
<b>Precautions</b>	FTH1 Antibody (C-term) is for research use only and not for use in diagnostic or therapeutic procedures.

## Protein Information

---

<b>Name</b>	FTH1
<b>Synonyms</b>	FTH, FTHL6
<b>Function</b>	Stores iron in a soluble, non-toxic, readily available form. Important for iron homeostasis. Has ferroxidase activity (PubMed: <a href="#">9003196</a> ). Iron is taken up in

the ferrous form and deposited as ferric hydroxides after oxidation (PubMed:[9003196](#)). Also plays a role in delivery of iron to cells (By similarity). Mediates iron uptake in capsule cells of the developing kidney (By similarity). Delivery to lysosomes is mediated by the cargo receptor NCOA4 for autophagic degradation and release of iron (PubMed:[24695223](#), PubMed:[26436293](#)).

<b>Cellular Location</b>	Cytoplasm. Lysosome. Cytoplasmic vesicle, autophagosome
<b>Tissue Location</b>	Expressed in the liver.

## Background

---

FRIH is the heavy subunit of ferritin, the major intracellular iron storage protein in prokaryotes and eukaryotes. It is composed of 24 subunits of the heavy and light ferritin chains. Variation in ferritin subunit composition may affect the rates of iron uptake and release in different tissues. A major function of ferritin is the storage of iron in a soluble and nontoxic state. Defects in ferritin proteins are associated with several neurodegenerative diseases.

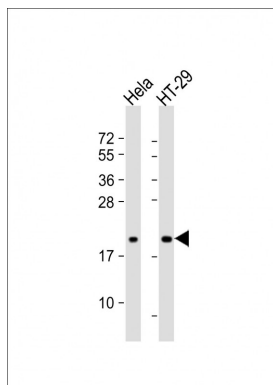
## References

---

Coffman,L.G., Proc. Natl. Acad. Sci. U.S.A. 106 (2), 570-575 (2009)  
Sammarco,M.C., J. Biol. Chem. 283 (8), 4578-4587 (2008)

## Images

---



All lanes : Anti-FRIH Antibody (C-term) at 1:1000 dilution  
Lane 1: HeLa whole cell lysate Lane 2: HT-29 whole cell lysate  
Lysates/proteins at 20 µg per lane. Secondary Goat Anti-Rabbit IgG, (H+L), Peroxidase conjugated at 1/10000 dilution. Predicted band size : 21 kDa  
Blocking/Dilution buffer: 5% NFDM/TBST.

Please note: All products are 'FOR RESEARCH USE ONLY. NOT FOR USE IN DIAGNOSTIC OR THERAPEUTIC PROCEDURES'.