

COL4A1 Antibody (N-term)

Affinity Purified Rabbit Polyclonal Antibody (Pab)
Catalog # AP7369a

Product Information

Application	WB, IF, E
Primary Accession	P02462
Other Accession	P02463
Reactivity	Human, Rat, Mouse
Host	Rabbit
Clonality	Polyclonal
Isotype	Rabbit IgG
Calculated MW	160611
Antigen Region	27-54

Additional Information

Gene ID	1282
Other Names	Collagen alpha-1(IV) chain, Arresten, COL4A1
Target/Specificity	This COL4A1 antibody is generated from rabbits immunized with a KLH conjugated synthetic peptide between 27-54 amino acids from the N-terminal region of human COL4A1.
Dilution	WB~~1:1000 IF~~1:25 E~~Use at an assay dependent concentration.
Format	Purified polyclonal antibody supplied in PBS with 0.09% (W/V) sodium azide. This antibody is purified through a protein A column, followed by peptide affinity purification.
Storage	Maintain refrigerated at 2-8°C for up to 2 weeks. For long term storage store at -20°C in small aliquots to prevent freeze-thaw cycles.
Precautions	COL4A1 Antibody (N-term) is for research use only and not for use in diagnostic or therapeutic procedures.

Protein Information

Name	COL4A1 (HGNC:2202)
Function	Type IV collagen is the major structural component of glomerular basement membranes (GBM), forming a 'chicken-wire' meshwork together with laminins, proteoglycans and entactin/nidogen.
Cellular Location	Secreted, extracellular space, extracellular matrix, basement membrane

Tissue Location Highly expressed in placenta.

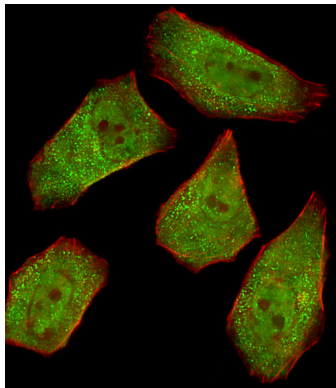
Background

COL4A1 is the major type IV alpha collagen chain of basement membranes. Like the other members of the type IV collagen gene family, this gene is organized in a head-to-head conformation with another type IV collagen gene so that each gene pair shares a common promoter.

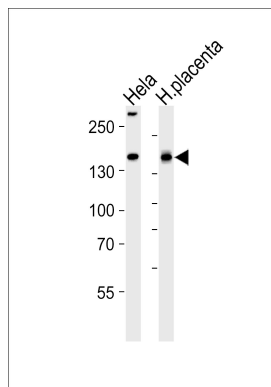
References

de Vries, L.S., *Ann. Neurol.* 65 (1), 12-18 (2009)
Mazouni, C., *Br. J. Cancer* 99 (1), 68-71 (2008)

Images



Fluorescent image of U251 cells stained with COL4A1 Antibody (N-term) (Cat#AP7369A). AP7369A was diluted at 1:25 dilution. An Alexa Fluor 488-conjugated goat anti-rabbit IgG at 1:400 dilution was used as the secondary antibody (green). Cytoplasmic actin was counterstained with Alexa Fluor® 555 conjugated with Phalloidin (red).



Western blot analysis of lysates from HeLa cell line and human placenta tissue lysate (from left to right), using COL4A1 Antibody (N-term) (Cat. #AP7369A). AP7369A was diluted at 1:1000 at each lane. A goat anti-rabbit IgG H&L (HRP) at 1:5000 dilution was used as the secondary antibody. Lysates at 35 µg per lane.

Citations

- [Follicle-stimulating hormone regulation of microRNA expression on progesterone production in cultured rat granulosa cells.](#)
- [MicroRNA-29a protects against acute liver injury in a mouse model of obstructive jaundice via inhibition of the extrinsic apoptosis pathway.](#)
- [Vitamin D-binding protein is required for the protective effects of vitamin D in renal fibroblasts and is phosphorylated in diabetic rats.](#)