

JAM-A Polyclonal Antibody

Catalog # AP73662

Product Information

Application	WB, IHC-P
Primary Accession	Q9Y624
Reactivity	Human, Rat
Host	Rabbit
Clonality	Polyclonal
Calculated MW	32583

Additional Information

Gene ID	50848
Other Names	F11R; JAM1; JCAM; Junctional adhesion molecule A; JAM-A; Junctional adhesion molecule 1; JAM-1; Platelet F11 receptor; Platelet adhesion molecule 1; PAM-1; CD321
Dilution	WB~~Western Blot: 1/500 - 1/2000. IHC-p: 1/100-1/300. ELISA: 1/20000. Not yet tested in other applications. IHC-P~~Western Blot: 1/500 - 1/2000. IHC-p: 1/100-1/300. ELISA: 1/20000. Not yet tested in other applications.
Format	Liquid in PBS containing 50% glycerol, 0.5% BSA and 0.09% (W/V) sodium azide.
Storage Conditions	-20°C

Protein Information

Name	F11R
Synonyms	JAM1, JCAM
Function	Seems to play a role in epithelial tight junction formation. Appears early in primordial forms of cell junctions and recruits PARD3 (PubMed: 11489913). The association of the PARD6-PARD3 complex may prevent the interaction of PARD3 with JAM1, thereby preventing tight junction assembly (By similarity). Plays a role in regulating monocyte transmigration involved in integrity of epithelial barrier (By similarity). Ligand for integrin alpha-L/beta-2 involved in memory T- cell and neutrophil transmigration (PubMed: 11812992). Involved in platelet activation (PubMed: 10753840).
Cellular Location	Cell junction, tight junction. Cell membrane; Single-pass type I membrane protein. Note=Localized at tight junctions of both epithelial and endothelial cells.

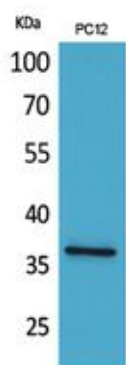
Tissue Location

Expressed in endothelium, epithelium and leukocytes (at protein level).

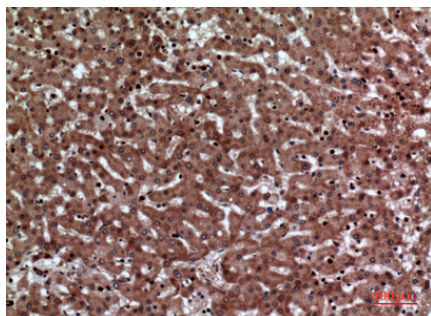
Background

Seems to play a role in epithelial tight junction formation. Appears early in primordial forms of cell junctions and recruits PARD3 (PubMed:[11489913](#)). The association of the PARD6- PARD3 complex may prevent the interaction of PARD3 with JAM1, thereby preventing tight junction assembly (By similarity). Plays a role in regulating monocyte transmigration involved in integrity of epithelial barrier (By similarity). Ligand for integrin alpha- L/beta-2 involved in memory T-cell and neutrophil transmigration (PubMed:[11812992](#)). Involved in platelet activation (PubMed:[10753840](#)).

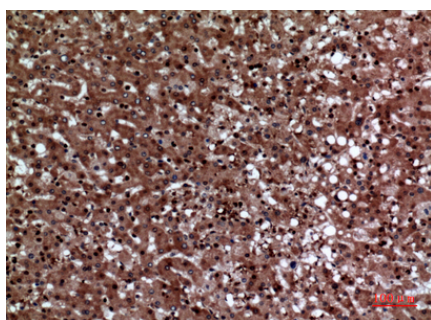
Images



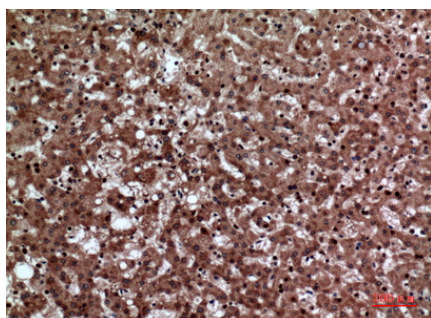
Western Blot analysis of PC12 cells using JAM-A Polyclonal Antibody.. Secondary antibody was diluted at 1:20000



Immunohistochemical analysis of paraffin-embedded human-liver, antibody was diluted at 1:100



Immunohistochemical analysis of paraffin-embedded human-liver, antibody was diluted at 1:100



Immunohistochemical analysis of paraffin-embedded human-liver, antibody was diluted at 1:100

Please note: All products are 'FOR RESEARCH USE ONLY. NOT FOR USE IN DIAGNOSTIC OR THERAPEUTIC PROCEDURES'.