

CD239 Polyclonal Antibody

Catalog # AP73660

Product Information

Application	WB, E
Primary Accession	P50895
Reactivity	Human, Mouse, Rat
Host	Rabbit
Clonality	Polyclonal
Calculated MW	67405

Additional Information

Gene ID	4059
Other Names	BCAM; LU; MSK19; Basal cell adhesion molecule; Auberger B antigen; B-CAM cell surface glycoprotein; F8/G253 antigen; Lutheran antigen; Lutheran blood group glycoprotein; CD239
Dilution	WB~~Western Blot: 1/500 - 1/2000. ELISA: 1/20000. Not yet tested in other applications. E~~N/A
Format	Liquid in PBS containing 50% glycerol, 0.5% BSA and 0.09% (W/V) sodium azide.
Storage Conditions	-20°C

Protein Information

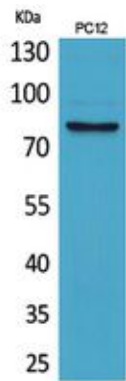
Name	BCAM
Synonyms	LU, MSK19
Function	Transmembrane glycoprotein that functions as both a receptor and an adhesion molecule playing a crucial role in cell adhesion, motility, migration and invasion (PubMed: 9616226 , PubMed: 31413112). Extracellular domain enables binding to extracellular matrix proteins, such as laminin, integrin and other ligands while its intracellular domain interacts with cytoskeletal proteins like hemoglobin, facilitating cell signal transduction (PubMed: 17158232). Serves as a receptor for laminin alpha-5/LAMA5 to promote cell adhesion (PubMed: 15975931). Mechanistically, JAK2 induces BCAM phosphorylation and activates its adhesion to laminin by stimulating a Rap1/AKT signaling pathway in the absence of EPOR (PubMed: 23160466).
Cellular Location	Cell membrane; Single-pass type I membrane protein
Tissue Location	Wide tissue distribution (highest in the pancreas and very low in brain).

Closely associated with the basal layer of cells in epithelia and the endothelium of blood vessel walls

Background

Laminin alpha-5 receptor. May mediate intracellular signaling.

Images



Western Blot analysis of PC12 cells using CD239 Polyclonal Antibody.. Secondary antibody was diluted at 1:20000

Please note: All products are 'FOR RESEARCH USE ONLY. NOT FOR USE IN DIAGNOSTIC OR THERAPEUTIC PROCEDURES'.