

# CD200 Polyclonal Antibody

Catalog # AP73657

## Product Information

---

<b>Application</b>	WB, IHC-P
<b>Primary Accession</b>	<a href="#">P41217</a>
<b>Reactivity</b>	Human
<b>Host</b>	Rabbit
<b>Clonality</b>	Polyclonal
<b>Calculated MW</b>	31264

## Additional Information

---

<b>Gene ID</b>	4345
<b>Other Names</b>	CD200; MOX1; MOX2; My033; OX-2 membrane glycoprotein; CD200
<b>Dilution</b>	WB~~Western Blot: 1/500 - 1/2000. IHC-p: 1/100-1/300. ELISA: 1/20000. Not yet tested in other applications. IHC-P~~Western Blot: 1/500 - 1/2000. IHC-p: 1/100-1/300. ELISA: 1/20000. Not yet tested in other applications.
<b>Format</b>	Liquid in PBS containing 50% glycerol, 0.5% BSA and 0.09% (W/V) sodium azide.
<b>Storage Conditions</b>	-20°C

## Protein Information

---

<b>Name</b>	CD200
<b>Synonyms</b>	MOX1, MOX2
<b>Function</b>	Costimulates T-cell proliferation. May regulate myeloid cell activity in a variety of tissues.
<b>Cellular Location</b>	Cell membrane; Single-pass type I membrane protein

## Background

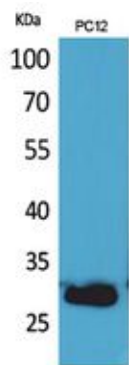
---

Costimulates T-cell proliferation. May regulate myeloid cell activity in a variety of tissues.

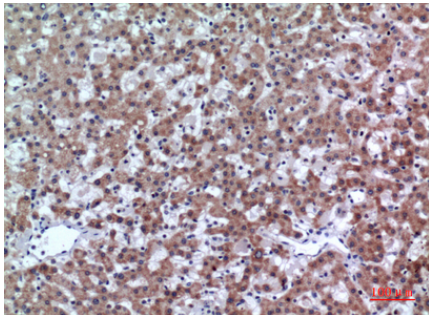
## Images

---

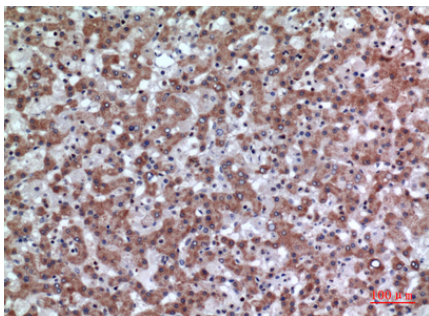
Western Blot analysis of PC12 cells using CD200



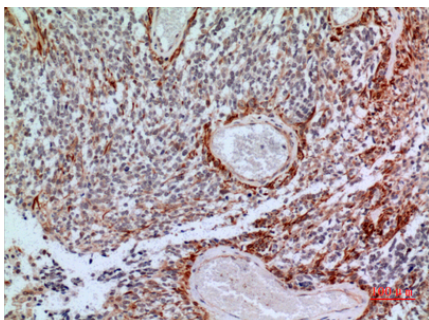
Polyclonal Antibody.. Secondary antibody was diluted at 1:20000



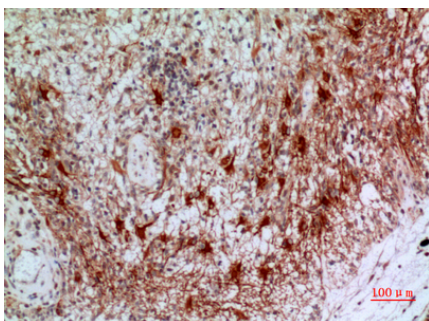
Immunohistochemical analysis of paraffin-embedded human-liver, antibody was diluted at 1:100



Immunohistochemical analysis of paraffin-embedded human-liver, antibody was diluted at 1:100



Immunohistochemical analysis of paraffin-embedded human-brain, antibody was diluted at 1:100



Immunohistochemical analysis of paraffin-embedded human-brain, antibody was diluted at 1:100

Please note: All products are 'FOR RESEARCH USE ONLY. NOT FOR USE IN DIAGNOSTIC OR THERAPEUTIC PROCEDURES'.