

D3DR Polyclonal Antibody

Catalog # AP73631

Product Information

Application	WB
Primary Accession	P35462
Reactivity	Human, Mouse, Rat
Host	Rabbit
Clonality	Polyclonal
Calculated MW	44195

Additional Information

Gene ID	1814
Other Names	DRD3; D(3) dopamine receptor; Dopamine D3 receptor
Dilution	WB~~Western Blot: 1/500 - 1/2000. ELISA: 1/20000. Not yet tested in other applications.
Format	Liquid in PBS containing 50% glycerol, 0.5% BSA and 0.09% (W/V) sodium azide.
Storage Conditions	-20°C

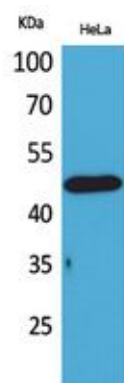
Protein Information

Name	DRD3 (HGNC:3024)
Function	Dopamine receptor whose activity is mediated by G proteins which inhibit adenylyl cyclase. Promotes cell proliferation.
Cellular Location	Cell membrane; Multi-pass membrane protein. Note=Both membrane-bound and scattered in the cytoplasm during basal conditions Receptor stimulation results in the rapid internalization and sequestration of the receptors at the perinuclear area (5 and 15 minutes), followed by the dispersal of the receptors to the membrane (30 minutes). DRD3 and GRK4 co-localize in lipid rafts of renal proximal tubule cells
Tissue Location	Brain.

Background

Dopamine receptor whose activity is mediated by G proteins which inhibit adenylyl cyclase. Promotes cell proliferation.

Images



Western Blot analysis of HeLa cells using D3DR Polyclonal Antibody.. Secondary antibody was diluted at 1:20000

Please note: All products are 'FOR RESEARCH USE ONLY. NOT FOR USE IN DIAGNOSTIC OR THERAPEUTIC PROCEDURES'.