

MDA-7 Polyclonal Antibody

Catalog # AP73594

Product Information

Application	WB, IHC-P
Primary Accession	Q13007
Reactivity	Human
Host	Rabbit
Clonality	Polyclonal
Calculated MW	23825

Additional Information

Gene ID	11009
Other Names	IL24; MDA7; ST16; Interleukin-24; IL-24; Melanoma differentiation-associated gene 7 protein; MDA-7; Suppression of tumorigenicity 16 protein
Dilution	WB~~Western Blot: 1/500 - 1/2000. IHC-p: 1/100-1/300. ELISA: 1/20000. Not yet tested in other applications. IHC-P~~Western Blot: 1/500 - 1/2000. IHC-p: 1/100-1/300. ELISA: 1/20000. Not yet tested in other applications.
Format	Liquid in PBS containing 50% glycerol, 0.5% BSA and 0.09% (W/V) sodium azide.
Storage Conditions	-20°C

Protein Information

Name	IL24
Synonyms	MDA7, ST16
Function	Multifunctional cytokine mainly produced by T-cells that plays a regulatory role in immune response, tissue homeostasis, host defense, and oncogenesis (PubMed: 25168428 , PubMed: 27687232). Possesses antiviral functions and induces the type I interferon response during influenza infection (PubMed: 27687232). Signals through two receptor complexes IL20RA/IL20RB or IL20RB/IL22RA1 (PubMed: 11706020 , PubMed: 30111632). In turn, stimulates the JAK1-STAT3 and MAPK pathways and promotes the secretion of pro-inflammatory mediators including IL8 and MMP1 (PubMed: 25168428). Intracellularly, maintains endoplasmic reticulum homeostasis by restricting the eIF2alpha-CHOP pathway- mediated stress signal (By similarity). In addition, acts as a quality control mechanism for the ubiquitin proteasome system by alerting the cell to proteasome dysfunction through activation of PKR/EIF2AK2 (By similarity).

Cellular Location

Secreted.

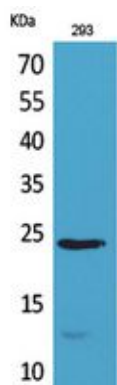
Tissue Location

Up-regulated in melanoma cells induced to terminally differentiate

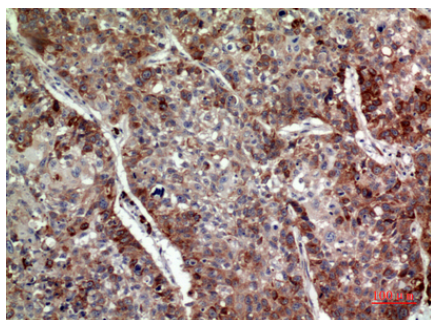
Background

Has antiproliferative properties on melanoma cells and may contribute to terminal cell differentiation.

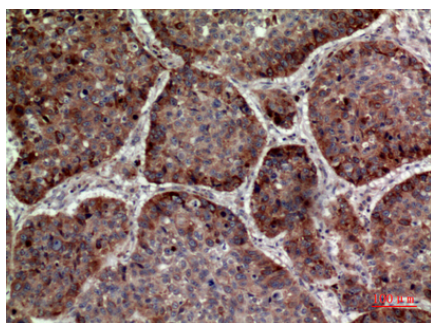
Images



Western Blot analysis of 293 cells using MDA-7 Polyclonal Antibody.. Secondary antibody was diluted at 1:20000



Immunohistochemical analysis of paraffin-embedded human-lung, antibody was diluted at 1:100



Immunohistochemical analysis of paraffin-embedded human-lung, antibody was diluted at 1:100

Please note: All products are 'FOR RESEARCH USE ONLY. NOT FOR USE IN DIAGNOSTIC OR THERAPEUTIC PROCEDURES'.