

# CD42b Polyclonal Antibody

Catalog # AP73576

## Product Information

---

<b>Application</b>	WB, IHC-P
<b>Primary Accession</b>	<a href="#">P07359</a>
<b>Reactivity</b>	Human
<b>Host</b>	Rabbit
<b>Clonality</b>	Polyclonal
<b>Calculated MW</b>	71540

## Additional Information

---

<b>Gene ID</b>	2811
<b>Other Names</b>	GP1BA; Platelet glycoprotein Ib alpha chain; GP-Ib alpha; GPIb-alpha; GPIbA; Glycoprotein Ibalpha; Antigen CD42b-alpha; CD42b
<b>Dilution</b>	WB~~Western Blot: 1/500 - 1/2000. IHC-p: 1/100-1/300. ELISA: 1/20000. Not yet tested in other applications. IHC-P~~Western Blot: 1/500 - 1/2000. IHC-p: 1/100-1/300. ELISA: 1/20000. Not yet tested in other applications.
<b>Format</b>	Liquid in PBS containing 50% glycerol, 0.5% BSA and 0.09% (W/V) sodium azide.
<b>Storage Conditions</b>	-20°C

## Protein Information

---

<b>Name</b>	GP1BA
<b>Function</b>	GP-Ib, a surface membrane protein of platelets, participates in the formation of platelet plugs by binding to the A1 domain of vWF, which is already bound to the subendothelium.
<b>Cellular Location</b>	Membrane; Single-pass type I membrane protein.

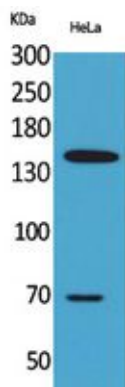
## Background

---

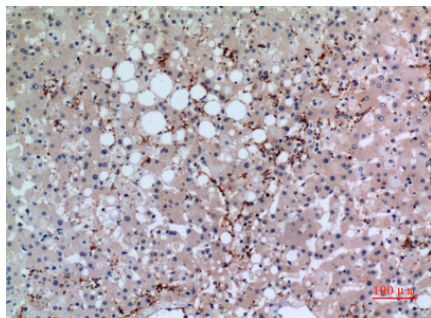
GP-Ib, a surface membrane protein of platelets, participates in the formation of platelet plugs by binding to the A1 domain of vWF, which is already bound to the subendothelium.

## Images

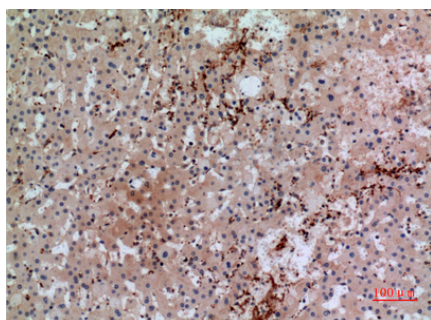
---



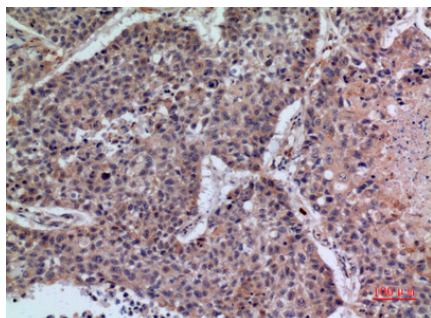
Western Blot analysis of HeLa cells using CD42b Polyclonal Antibody.. Secondary antibody was diluted at 1:20000



Immunohistochemical analysis of paraffin-embedded human-liver, antibody was diluted at 1:100



Immunohistochemical analysis of paraffin-embedded human-liver, antibody was diluted at 1:100



Immunohistochemical analysis of paraffin-embedded human-lung, antibody was diluted at 1:100

Please note: All products are 'FOR RESEARCH USE ONLY. NOT FOR USE IN DIAGNOSTIC OR THERAPEUTIC PROCEDURES'.