

NTCP Polyclonal Antibody

Catalog # AP73555

Product Information

Application	WB, IHC-P
Primary Accession	Q14973
Reactivity	Human
Host	Rabbit
Clonality	Polyclonal
Calculated MW	38119

Additional Information

Gene ID	6554
Other Names	SLC10A1; NTCP; GIG29; Sodium/bile acid cotransporter; Cell growth-inhibiting gene 29 protein; Na(+)/bile acid cotransporter; Na(+)/taurocholate transport protein; Sodium/taurocholate cotransporting polypeptide; Solute carrier family 10 member 1
Dilution	WB~~Western Blot: 1/500 - 1/2000. IHC-p: 1/100-1/300. ELISA: 1/20000. Not yet tested in other applications. IHC-P~~Western Blot: 1/500 - 1/2000. IHC-p: 1/100-1/300. ELISA: 1/20000. Not yet tested in other applications.
Format	Liquid in PBS containing 50% glycerol, 0.5% BSA and 0.09% (W/V) sodium azide.
Storage Conditions	-20°C

Protein Information

Name	SLC10A1
Synonyms	NTCP
Function	<p>As a major transporter of conjugated bile salts from plasma into the hepatocyte, it plays a key role in the enterohepatic circulation of bile salts necessary for the solubilization and absorption of dietary fat and fat-soluble vitamins (PubMed:14660639, PubMed:24867799, PubMed:34060352, PubMed:8132774). It is strictly dependent on the extracellular presence of sodium (PubMed:14660639, PubMed:24867799, PubMed:34060352, PubMed:8132774). It exhibits broad substrate specificity and transports various bile acids, such as taurocholate, cholate, as well as non-bile acid organic compounds, such as estrone sulfate (PubMed:14660639, PubMed:34060352). Works collaboratively with the ileal transporter (NTCP2), the organic solute transporter (OST), and the bile salt export pump (BSEP), to ensure efficacious biological recycling of bile acids during enterohepatic</p>

circulation (PubMed:[33222321](#)).

Cellular Location

Cell membrane; Multi-pass membrane protein

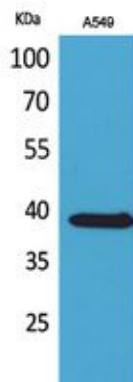
Tissue Location

Expressed in liver (PubMed:11031103, PubMed:12409283). Expressed in placental trophoblasts (PubMed:12409283).

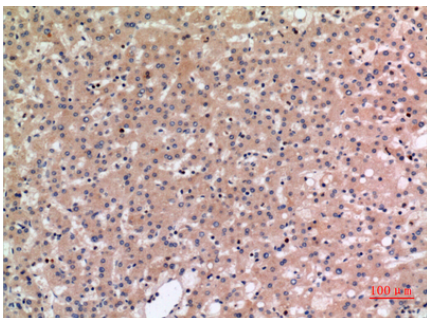
Background

The hepatic sodium/bile acid uptake system exhibits broad substrate specificity and transports various non-bile acid organic compounds as well. It is strictly dependent on the extracellular presence of sodium.

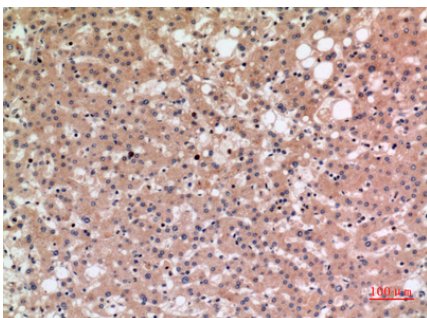
Images



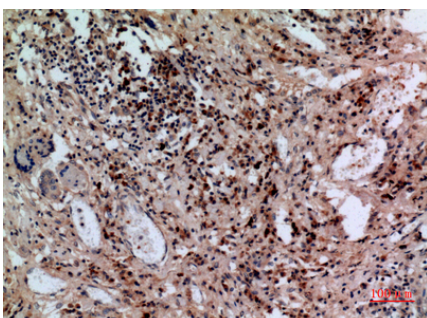
Western Blot analysis of A549 cells using NTCP Polyclonal Antibody.. Secondary antibody was diluted at 1:20000



Immunohistochemical analysis of paraffin-embedded human-liver, antibody was diluted at 1:100



Immunohistochemical analysis of paraffin-embedded human-liver, antibody was diluted at 1:100



Immunohistochemical analysis of paraffin-embedded human-lung, antibody was diluted at 1:100

Please note: All products are 'FOR RESEARCH USE ONLY. NOT FOR USE IN DIAGNOSTIC OR THERAPEUTIC PROCEDURES'.