

ALDH2 Polyclonal Antibody

Catalog # AP73538

Product Information

| | |
|--------------------------|------------------------|
| Application | WB, IHC-P, IF, ICC, E |
| Primary Accession | P05091 |
| Reactivity | Human, Mouse, Rat |
| Host | Rabbit |
| Clonality | Polyclonal |
| Calculated MW | 56381 |

Additional Information

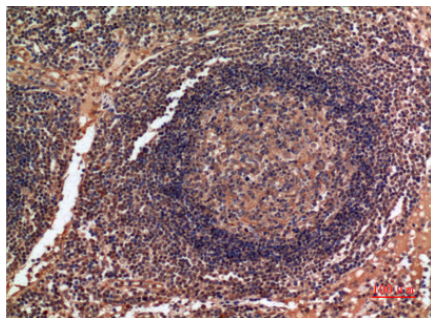
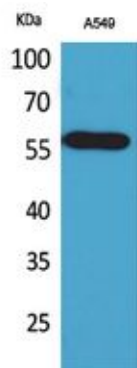
| | |
|---------------------------|---|
| Gene ID | 217 |
| Other Names | ALDH2; ALDM; Aldehyde dehydrogenase, mitochondrial; ALDH class 2; ALDH-E2; ALDHI |
| Dilution | WB~~Western Blot: 1/500 - 1/2000. IHC-p: 1/100-1/300. ELISA: 1/20000. Not yet tested in other applications. IHC-P~~Western Blot: 1/500 - 1/2000. IHC-p: 1/100-1/300. ELISA: 1/20000. Not yet tested in other applications. IF~~1:50~200 ICC~~N/A E~~N/A |
| Format | Liquid in PBS containing 50% glycerol, 0.5% BSA and 0.09% (W/V) sodium azide. |
| Storage Conditions | -20°C |

Protein Information

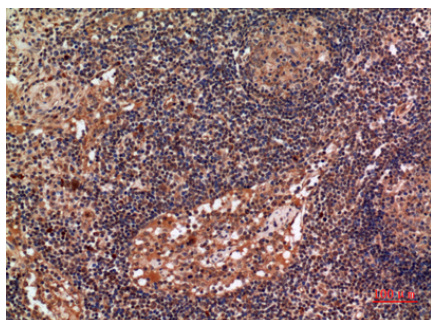
| | |
|--------------------------|---|
| Name | ALDH2 |
| Synonyms | ALDM |
| Function | Required for clearance of cellular formaldehyde, a cytotoxic and carcinogenic metabolite that induces DNA damage. |
| Cellular Location | Mitochondrion matrix. |

Images

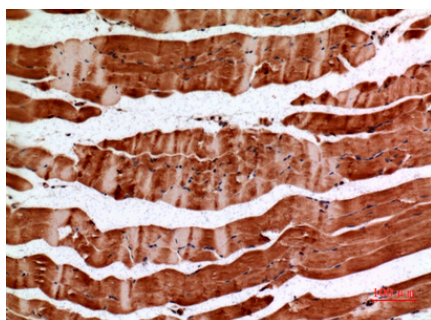
Western Blot analysis of A549 cells using ALDH2 Polyclonal Antibody.. Secondary antibody was diluted at 1:20000



Immunohistochemical analysis of paraffin-embedded human-lymph-gland, antibody was diluted at 1:100



Immunohistochemical analysis of paraffin-embedded human-lymph-gland, antibody was diluted at 1:100



Immunohistochemical analysis of paraffin-embedded mouse-muscle, antibody was diluted at 1:100

Please note: All products are 'FOR RESEARCH USE ONLY. NOT FOR USE IN DIAGNOSTIC OR THERAPEUTIC PROCEDURES'.