

# GDI-2 Polyclonal Antibody

Catalog # AP73500

## Product Information

---

Application	WB, IHC-P
Primary Accession	<a href="#">P50395</a>
Reactivity	Human, Mouse, Rat
Host	Rabbit
Clonality	Polyclonal
Calculated MW	50663

## Additional Information

---

Gene ID	2665
Other Names	GDI2; RABGDIB; Rab GDP dissociation inhibitor beta; Rab GDI beta; Guanosine diphosphate dissociation inhibitor 2; GDI-2
Dilution	WB~~Western Blot: 1/500 - 1/2000. IHC-p: 1/100-1/300. ELISA: 1/20000. Not yet tested in other applications. IHC-P~~Western Blot: 1/500 - 1/2000. IHC-p: 1/100-1/300. ELISA: 1/20000. Not yet tested in other applications.
Format	Liquid in PBS containing 50% glycerol, 0.5% BSA and 0.09% (W/V) sodium azide.
Storage Conditions	-20°C

## Protein Information

---

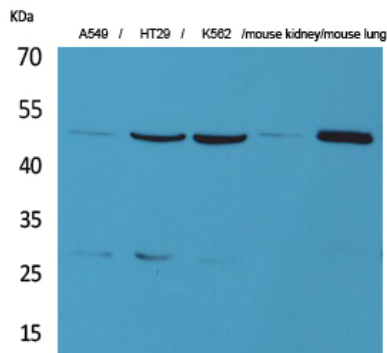
Name	GDI2
Synonyms	RABGDIB
Function	GDP-dissociation inhibitor preventing the GDP to GTP exchange of most Rab proteins. By keeping these small GTPases in their inactive GDP-bound form regulates intracellular membrane trafficking (PubMed: <a href="#">25860027</a> ). Negatively regulates protein transport to the cilium and ciliogenesis through the inhibition of RAB8A (PubMed: <a href="#">25860027</a> ).
Cellular Location	Cytoplasm. Membrane; Peripheral membrane protein. Golgi apparatus, trans-Golgi network
Tissue Location	Ubiquitous..

## Background

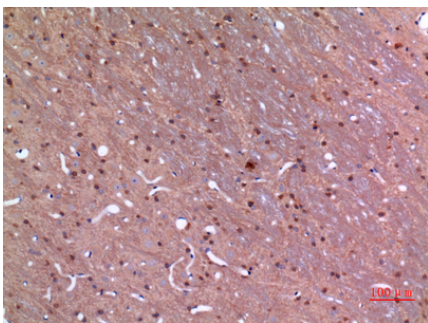
---

Regulates the GDP/GTP exchange reaction of most Rab proteins by inhibiting the dissociation of GDP from them, and the subsequent binding of GTP to them.

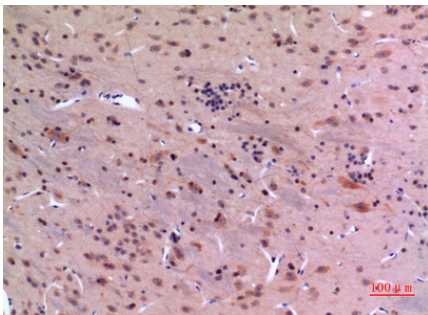
## Images



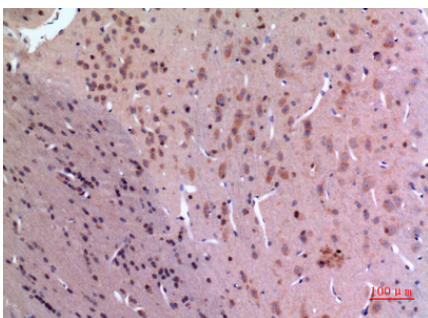
Western Blot analysis of A549, HT29, K562, mouse kidney, mouse lung cells using GDI-2 Polyclonal Antibody.. Secondary antibody was diluted at 1:20000



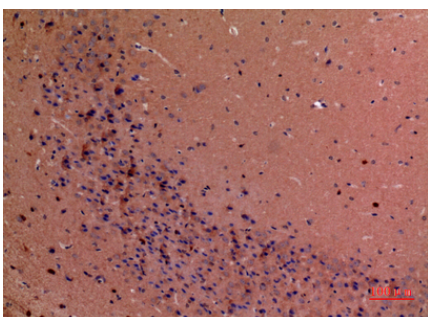
Immunohistochemical analysis of paraffin-embedded rat-brain, antibody was diluted at 1:100



Immunohistochemical analysis of paraffin-embedded rat-brain, antibody was diluted at 1:100



Immunohistochemical analysis of paraffin-embedded rat-brain, antibody was diluted at 1:100



Immunohistochemical analysis of paraffin-embedded mouse-brain, antibody was diluted at 1:100

Please note: All products are 'FOR RESEARCH USE ONLY. NOT FOR USE IN DIAGNOSTIC OR THERAPEUTIC PROCEDURES'.