

ZKSCAN4 Polyclonal Antibody

Catalog # AP73498

Product Information

| | |
|--------------------------|------------------------|
| Application | WB, IHC-P |
| Primary Accession | Q969J2 |
| Reactivity | Human |
| Host | Rabbit |
| Clonality | Polyclonal |
| Calculated MW | 61579 |

Additional Information

| | |
|---------------------------|--|
| Gene ID | 387032 |
| Other Names | ZKSCAN4; ZNF307; ZNF427; Zinc finger protein with KRAB and SCAN domains 4; P373c6.1; Zinc finger protein 307; Zinc finger protein 427 |
| Dilution | WB~~Western Blot: 1/500 - 1/2000. IHC-p: 1/100-1/300. ELISA: 1/20000. Not yet tested in other applications. IHC-P~~Western Blot: 1/500 - 1/2000. IHC-p: 1/100-1/300. ELISA: 1/20000. Not yet tested in other applications. |
| Format | Liquid in PBS containing 50% glycerol, 0.5% BSA and 0.09% (W/V) sodium azide. |
| Storage Conditions | -20°C |

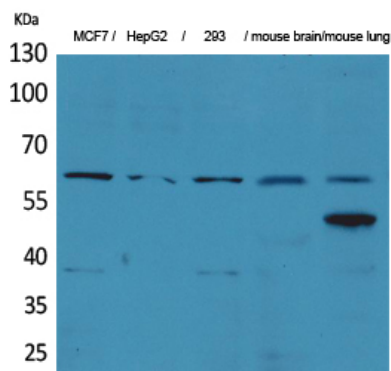
Protein Information

| | |
|--------------------------|---|
| Name | ZKSCAN4 |
| Synonyms | ZNF307, ZNF427 |
| Function | May be involved in the transcriptional activation of MDM2 and EP300 genes. |
| Cellular Location | Nucleus {ECO:0000255 PROSITE-ProRule:PRU00187, ECO:0000269 PubMed:17910948} |
| Tissue Location | Expressed in adult heart, brain, placenta, lung and kidney, but not in adult liver and skeletal muscle. In 17-day old embryo, detected in liver, skeletal muscle, brain, heart and small intestine. |

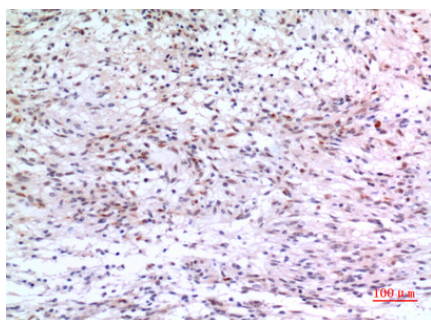
Background

May be involved in the transcriptional activation of MDM2 and EP300 genes.

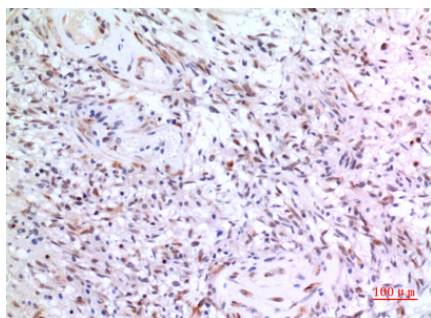
Images



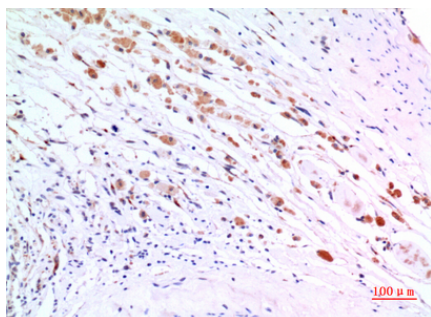
Western Blot analysis of MCF7, HepG2, 293, mouse brain, mouse lung cells using ZKSCAN4 Polyclonal Antibody.. Secondary antibody was diluted at 1:20000 cells nucleus extracted by Minute TM Cytoplasmic and Nuclear Fractionation kit (SC-003, Invent biotech, MN, USA).



Immunohistochemical analysis of paraffin-embedded human-brain, antibody was diluted at 1:100



Immunohistochemical analysis of paraffin-embedded human-brain, antibody was diluted at 1:100



Immunohistochemical analysis of paraffin-embedded human-brain, antibody was diluted at 1:100

Please note: All products are 'FOR RESEARCH USE ONLY. NOT FOR USE IN DIAGNOSTIC OR THERAPEUTIC PROCEDURES'.