

MCP-2 Polyclonal Antibody

Catalog # AP73476

Product Information

Application	WB
Primary Accession	P80075
Reactivity	Human
Host	Rabbit
Clonality	Polyclonal
Calculated MW	11246

Additional Information

Gene ID	6355
Other Names	CCL8; MCP2; SCYA10; SCYA8; C-C motif chemokine 8; HC14; Monocyte chemoattractant protein 2; Monocyte chemotactic protein 2; MCP-2; Small-inducible cytokine A8
Dilution	WB~~Western Blot: 1/500 - 1/2000. ELISA: 1/20000. Not yet tested in other applications.
Format	Liquid in PBS containing 50% glycerol, 0.5% BSA and 0.09% (W/V) sodium azide.
Storage Conditions	-20°C

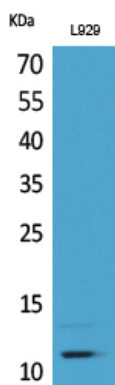
Protein Information

Name	CCL8
Synonyms	MCP2, SCYA10, SCYA8
Function	Chemotactic factor that attracts monocytes, lymphocytes, basophils and eosinophils. May play a role in neoplasia and inflammatory host responses. This protein can bind heparin. The processed form MCP-2(6-76) does not show monocyte chemotactic activity, but inhibits the chemotactic effect most predominantly of CCL7, and also of CCL2 and CCL5 and CCL8.
Cellular Location	Secreted.
Tissue Location	Highest expression found in the small intestine and peripheral blood cells. Intermediate levels seen in the heart, placenta, lung, skeletal muscle, thymus, colon, ovary, spinal cord and pancreas. Low levels seen in the brain, liver, spleen and prostate

Background

Chemotactic factor that attracts monocytes, lymphocytes, basophils and eosinophils. May play a role in neoplasia and inflammatory host responses. This protein can bind heparin. The processed form MCP-2(6-76) does not show monocyte chemotactic activity, but inhibits the chemotactic effect most predominantly of CCL7, and also of CCL2 and CCL5 and CCL8.

Images



Western Blot analysis of L929 cells using MCP-2 Polyclonal Antibody.. Secondary antibody was diluted at 1:20000

Please note: All products are 'FOR RESEARCH USE ONLY. NOT FOR USE IN DIAGNOSTIC OR THERAPEUTIC PROCEDURES'.