

CD201 Polyclonal Antibody

Catalog # AP73470

Product Information

Application	WB, IHC-P
Primary Accession	Q9UNN8
Reactivity	Human, Mouse, Rat
Host	Rabbit
Clonality	Polyclonal
Calculated MW	26671

Additional Information

Gene ID	10544
Other Names	PROCR; EPCR; Endothelial protein C receptor; Activated protein C receptor; APC receptor; Endothelial cell protein C receptor; CD201
Dilution	WB~~Western Blot: 1/500 - 1/2000. IHC-p: 1:100-300 ELISA: 1/20000. Not yet tested in other applications. IHC-P~~Western Blot: 1/500 - 1/2000. IHC-p: 1:100-300 ELISA: 1/20000. Not yet tested in other applications.
Format	Liquid in PBS containing 50% glycerol, 0.5% BSA and 0.09% (W/V) sodium azide.
Storage Conditions	-20°C

Protein Information

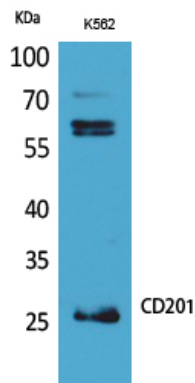
Name	PROCR
Synonyms	EPCR
Function	Binds activated protein C. Enhances protein C activation by the thrombin-thrombomodulin complex; plays a role in the protein C pathway controlling blood coagulation.
Cellular Location	Membrane; Single-pass type I membrane protein.
Tissue Location	Expressed strongly in the endothelial cells of arteries and veins in heart and lung, less intensely in capillaries in the lung and skin, and not at all in the endothelium of small vessels of the liver and kidney

Background

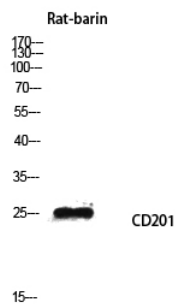
Binds activated protein C. Enhances protein C activation by the thrombin-thrombomodulin complex; plays

a role in the protein C pathway controlling blood coagulation.

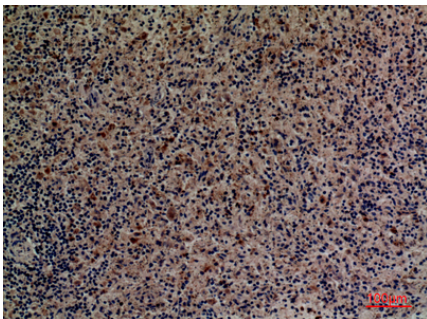
Images



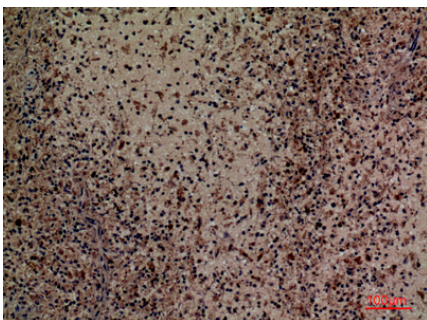
Western Blot analysis of K562 cells using CD201 Polyclonal Antibody. Antibody was diluted at 1:500. Secondary antibody was diluted at 1:20000



Western blot analysis of Rat-barin lysis using CD201 antibody. Antibody was diluted at 1:500. Secondary antibody was diluted at 1:20000

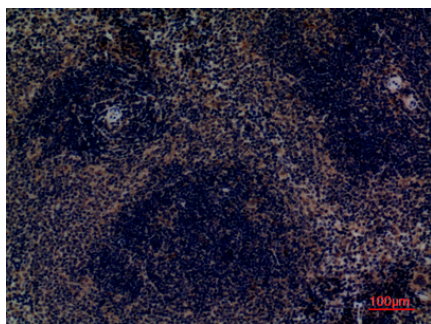


Immunohistochemical analysis of paraffin-embedded human-spleen, antibody was diluted at 1:100



Immunohistochemical analysis of paraffin-embedded human-spleen, antibody was diluted at 1:100

Immunohistochemical analysis of paraffin-embedded mouse-spleen, antibody was diluted at 1:100



Please note: All products are 'FOR RESEARCH USE ONLY. NOT FOR USE IN DIAGNOSTIC OR THERAPEUTIC PROCEDURES'.