

# CD66e Polyclonal Antibody

Catalog # AP73355

## Product Information

---

Application	WB, IHC-P, IF, ICC, E
Primary Accession	<a href="#">P06731</a>
Reactivity	Human, Rat, Mouse
Host	Rabbit
Clonality	Polyclonal
Calculated MW	76796

## Additional Information

---

Gene ID	1048
Other Names	CEACAM5; CEA; Carcinoembryonic antigen-related cell adhesion molecule 5; Carcinoembryonic antigen; CEA; Meconium antigen 100; CD66e
Dilution	WB~~Western Blot: 1/500 - 1/2000. IHC-p: 1:100-300 ELISA: 1/20000. Not yet tested in other applications. IHC-P~~Western Blot: 1/500 - 1/2000. IHC-p: 1:100-300 ELISA: 1/20000. Not yet tested in other applications. IF~~1:50~200 ICC~~N/A E~~N/A
Format	Liquid in PBS containing 50% glycerol, 0.5% BSA and 0.09% (W/V) sodium azide.
Storage Conditions	-20°C

## Protein Information

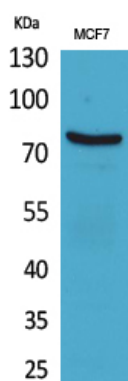
---

Name	CEACAM5 ( <a href="#">HGNC:1817</a> )
Function	Cell surface glycoprotein that plays a role in cell adhesion, intracellular signaling and tumor progression (PubMed: <a href="#">10864933</a> , PubMed: <a href="#">10910050</a> , PubMed: <a href="#">2803308</a> ). Mediates homophilic and heterophilic cell adhesion with other carcinoembryonic antigen-related cell adhesion molecules, such as CEACAM6 (PubMed: <a href="#">2803308</a> ). Plays a role as an oncogene by promoting tumor progression; induces resistance to anoikis of colorectal carcinoma cells (PubMed: <a href="#">10910050</a> ).
Cellular Location	Cell membrane; Lipid-anchor, GPI-anchor; Extracellular side. Apical cell membrane. Cell surface Note=Localized to the apical glycocalyx surface
Tissue Location	Expressed in columnar epithelial and goblet cells of the colon (at protein level) (PubMed:10436421). Found in adenocarcinomas of endodermally derived digestive system epithelium and fetal colon.

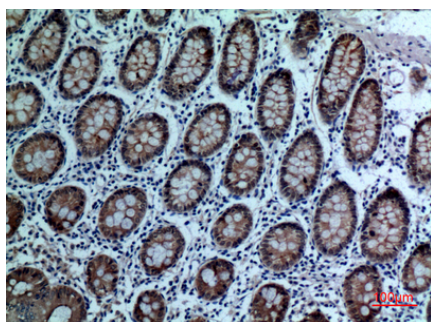
## Background

Cell surface glycoprotein that plays a role in cell adhesion, intracellular signaling and tumor progression (PubMed:[2803308](#), PubMed:[10910050](#), PubMed:[10864933](#)). Mediates homophilic and heterophilic cell adhesion with other carcinoembryonic antigen-related cell adhesion molecules, such as CEACAM6 (PubMed:[2803308](#)). Plays a role as an oncogene by promoting tumor progression; induces resistance to anoikis of colorectal carcinoma cells (PubMed:[10910050](#)).

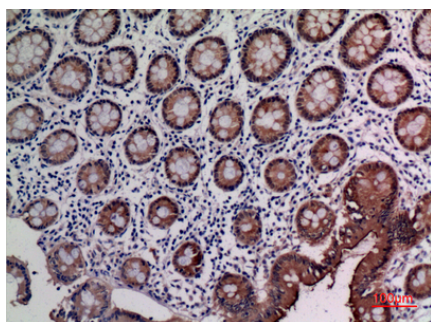
## Images



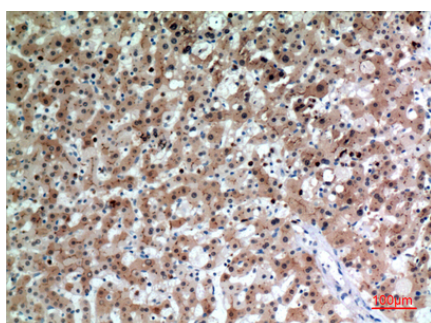
Western Blot analysis of MCF7 cells using CD66e Polyclonal Antibody.. Secondary antibody was diluted at 1:20000



Immunohistochemical analysis of paraffin-embedded human-colon, antibody was diluted at 1:100

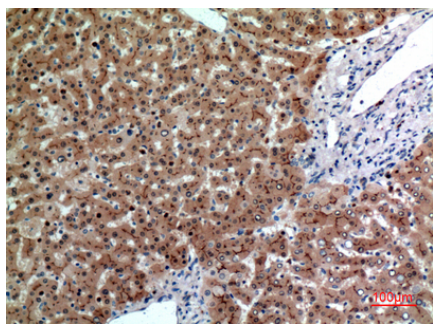


Immunohistochemical analysis of paraffin-embedded human-colon, antibody was diluted at 1:100



Immunohistochemical analysis of paraffin-embedded human-liver, antibody was diluted at 1:100

Immunohistochemical analysis of paraffin-embedded human-liver, antibody was diluted at 1:100



Please note: All products are 'FOR RESEARCH USE ONLY. NOT FOR USE IN DIAGNOSTIC OR THERAPEUTIC PROCEDURES'.