

# CPE Polyclonal Antibody

Catalog # AP73350

## Product Information

---

Application	WB, IHC-P
Primary Accession	<a href="#">P16870</a>
Reactivity	Human, Mouse, Rat
Host	Rabbit
Clonality	Polyclonal
Calculated MW	53151

## Additional Information

---

Gene ID	1363
Other Names	CPE; Carboxypeptidase E; CPE; Carboxypeptidase H; CPH; Enkephalin convertase; Prohormone-processing carboxypeptidase
Dilution	WB~~Western Blot: 1/500 - 1/2000. IHC-p: 1:100-300 ELISA: 1/20000. Not yet tested in other applications. IHC-P~~Western Blot: 1/500 - 1/2000. IHC-p: 1:100-300 ELISA: 1/20000. Not yet tested in other applications.
Format	Liquid in PBS containing 50% glycerol, 0.5% BSA and 0.09% (W/V) sodium azide.
Storage Conditions	-20°C

## Protein Information

---

Name	CPE
Function	Sorting receptor that directs prohormones to the regulated secretory pathway. Also acts as a prohormone processing enzyme in neuro/endocrine cells, removing dibasic residues from the C-terminal end of peptide hormone precursors after initial endoprotease cleavage.
Cellular Location	[Isoform 1]: Cytoplasmic vesicle, secretory vesicle {ECO:0000250 UniProtKB:Q00493}. Cytoplasmic vesicle, secretory vesicle membrane {ECO:0000250 UniProtKB:P15087}; Peripheral membrane protein {ECO:0000250 UniProtKB:P15087}. Secreted {ECO:0000250 UniProtKB:P15087}. Note=Associated with the secretory granule membrane through direct binding to lipid rafts in intragranular conditions. {ECO:0000250 UniProtKB:Q00493}

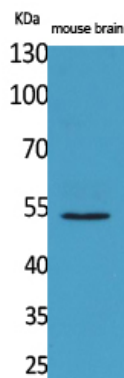
## Background

---

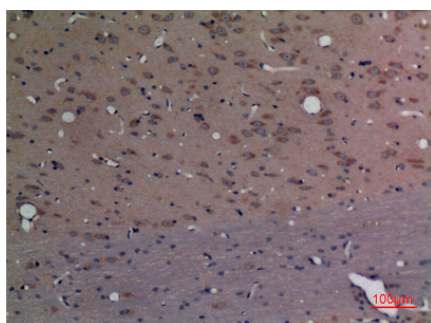
Removes residual C-terminal Arg or Lys remaining after initial endoprotease cleavage during prohormone processing. Processes proinsulin.

## Images

---



Western Blot analysis of mouse brain cells using CPE Polyclonal Antibody.. Secondary antibody was diluted at 1:20000



Immunohistochemical analysis of paraffin-embedded rat-brain, antibody was diluted at 1:100

Please note: All products are 'FOR RESEARCH USE ONLY. NOT FOR USE IN DIAGNOSTIC OR THERAPEUTIC PROCEDURES'.