

FGF-12 Polyclonal Antibody

Catalog # AP73344

Product Information

Application	WB, IHC-P
Primary Accession	P61328
Reactivity	Human, Mouse, Rat
Host	Rabbit
Clonality	Polyclonal
Calculated MW	27399

Additional Information

Gene ID	2257
Other Names	FGF12; FGF12B; FHF1; Fibroblast growth factor 12; FGF-12; Fibroblast growth factor homologous factor 1; FHF-1; Myocyte-activating factor
Dilution	WB~~Western Blot: 1/500 - 1/2000. IHC-p: 1:100-300 ELISA: 1/20000. Not yet tested in other applications. IHC-P~~Western Blot: 1/500 - 1/2000. IHC-p: 1:100-300 ELISA: 1/20000. Not yet tested in other applications.
Format	Liquid in PBS containing 50% glycerol, 0.5% BSA and 0.09% (W/V) sodium azide.
Storage Conditions	-20°C

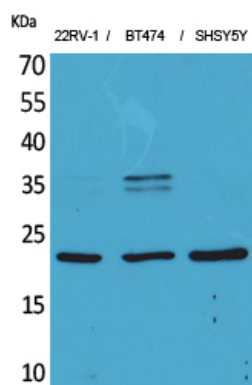
Protein Information

Name	FGF12
Synonyms	FGF12B, FHF1
Function	Involved in nervous system development and function. Involved in the positive regulation of voltage-gated sodium channel activity. Promotes neuronal excitability by elevating the voltage dependence of neuronal sodium channel SCN8A fast inactivation.
Cellular Location	Nucleus.
Tissue Location	Brain, eye and testis; highly expressed in embryonic retina, olfactory epithelium, olfactory bulb, and in a segmental pattern of the body wall; in adult olfactory bulb, less in cerebellum, deep cerebellar nuclei, cortex and multiple midbrain structures

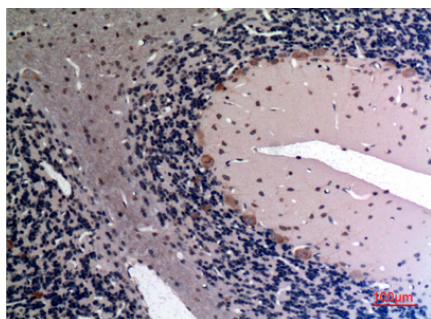
Background

Involved in nervous system development and function. Involved in the positive regulation of voltage-gated sodium channel activity. Promotes neuronal excitability by elevating the voltage dependence of neuronal sodium channel SCN8A fast inactivation.

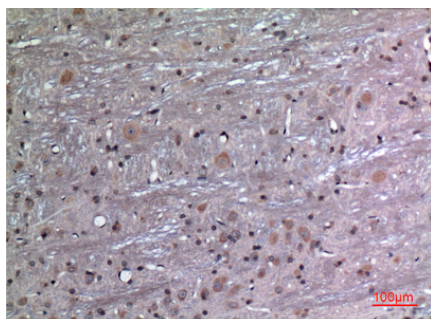
Images



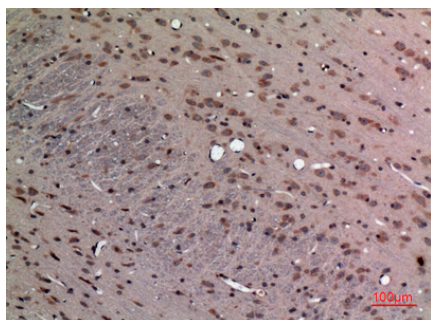
Western Blot analysis of 22RV-1, BT474, SHSY5Y cells using FGF-12 Polyclonal Antibody.. Secondary antibody was diluted at 1:20000 cells nucleus extracted by Minute TM Cytoplasmic and Nuclear Fractionation kit (SC-003, Invent biotech, MN, USA).



Immunohistochemical analysis of paraffin-embedded rat-brain, antibody was diluted at 1:100

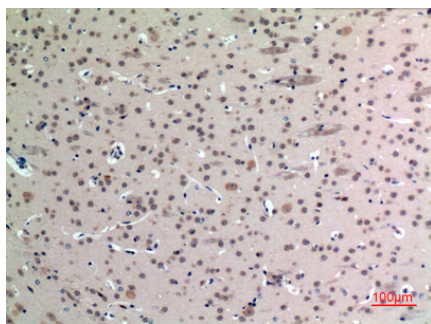


Immunohistochemical analysis of paraffin-embedded rat-brain, antibody was diluted at 1:100



Immunohistochemical analysis of paraffin-embedded rat-brain, antibody was diluted at 1:100

Immunohistochemical analysis of paraffin-embedded mouse-brain, antibody was diluted at 1:100



Please note: All products are 'FOR RESEARCH USE ONLY. NOT FOR USE IN DIAGNOSTIC OR THERAPEUTIC PROCEDURES'.