

KLF12 Polyclonal Antibody

Catalog # AP73302

Product Information

| | |
|--------------------------|------------------------|
| Application | WB, IHC-P |
| Primary Accession | Q9Y4X4 |
| Reactivity | Human, Mouse |
| Host | Rabbit |
| Clonality | Polyclonal |
| Calculated MW | 44240 |

Additional Information

| | |
|---------------------------|--|
| Gene ID | 11278 |
| Other Names | KLF12; AP2REP; HSPC122; Krueppel-like factor 12; Transcriptional repressor AP-2rep |
| Dilution | WB~~Western Blot: 1/500 - 1/2000. IHC-p: 1:100-300 ELISA: 1/20000. Not yet tested in other applications. IHC-P~~Western Blot: 1/500 - 1/2000. IHC-p: 1:100-300 ELISA: 1/20000. Not yet tested in other applications. |
| Format | Liquid in PBS containing 50% glycerol, 0.5% BSA and 0.09% (W/V) sodium azide. |
| Storage Conditions | -20°C |

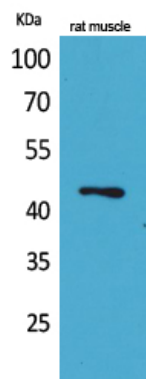
Protein Information

| | |
|--------------------------|--|
| Name | KLF12 |
| Synonyms | AP2REP |
| Function | Confers strong transcriptional repression to the AP-2-alpha gene. Binds to a regulatory element (A32) in the AP-2-alpha gene promoter. |
| Cellular Location | Nucleus. |

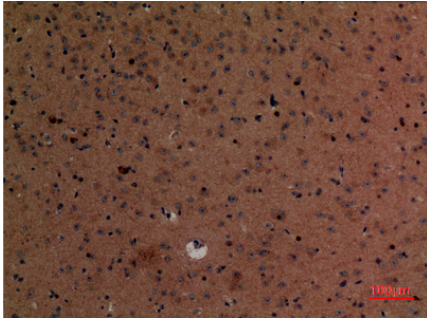
Background

Confers strong transcriptional repression to the AP-2- alpha gene. Binds to a regulatory element (A32) in the AP-2-alpha gene promoter.

Images



Western Blot analysis of rat muscle cells using KLF12 Polyclonal Antibody.. Secondary antibody was diluted at 1:20000 cells nucleus extracted by Minute TM Cytoplasmic and Nuclear Fractionation kit (SC-003, Inventbiotech, MN, USA).



Immunohistochemical analysis of paraffin-embedded mouse-brain, antibody was diluted at 1:100

Please note: All products are 'FOR RESEARCH USE ONLY. NOT FOR USE IN DIAGNOSTIC OR THERAPEUTIC PROCEDURES'.