

# RhCG Polyclonal Antibody

Catalog # AP73271

## Product Information

---

<b>Application</b>	WB, IHC-P, IF, ICC, E
<b>Primary Accession</b>	<a href="#">Q9UBD6</a>
<b>Reactivity</b>	Human, Rat, Mouse
<b>Host</b>	Rabbit
<b>Clonality</b>	Polyclonal
<b>Calculated MW</b>	53179

## Additional Information

---

<b>Gene ID</b>	51458
<b>Other Names</b>	RHCG; C15orf6; CDRC2; PDRC2; RHGK; Ammonium transporter Rh type C; Rh glycoprotein kidney; Rhesus blood group family type C glycoprotein; Rh family type C glycoprotein; Rh type C glycoprotein; Tumor-related protein DRC2
<b>Dilution</b>	WB~~Western Blot: 1/500 - 1/2000. IHC-p: 1:100-300 ELISA: 1/40000. Not yet tested in other applications. IHC-P~~Western Blot: 1/500 - 1/2000. IHC-p: 1:100-300 ELISA: 1/40000. Not yet tested in other applications. IF~~1:50~200 ICC~~N/A E~~N/A
<b>Format</b>	Liquid in PBS containing 50% glycerol, 0.5% BSA and 0.09% (W/V) sodium azide.
<b>Storage Conditions</b>	-20°C

## Protein Information

---

<b>Name</b>	RHCG
<b>Synonyms</b>	C15orf6, CDRC2, PDRC2, RHGK
<b>Function</b>	Ammonium transporter involved in the maintenance of acid-base homeostasis. Transports ammonium and its related derivative methylammonium across the plasma membrane of epithelial cells likely contributing to renal transepithelial ammonia transport and ammonia metabolism. Postulated to primarily mediate an electroneutral bidirectional transport of NH <sub>3</sub> ammonia species according to a mechanism that implies interaction of an NH <sub>4</sub> (+) ion with acidic residues of the pore entry followed by dissociation of NH <sub>4</sub> (+) into NH <sub>3</sub> and H(+). As a result NH <sub>3</sub> transits through the central pore and is protonated on the extracellular side reforming NH <sub>4</sub> (+) (PubMed: <a href="#">11062476</a> , PubMed: <a href="#">14761968</a> , PubMed: <a href="#">15929723</a> , PubMed: <a href="#">16477434</a> , PubMed: <a href="#">16580862</a> , PubMed: <a href="#">24077989</a> ). May act as a CO <sub>2</sub> channel providing for renal acid secretion (PubMed: <a href="#">24077989</a> ).

## Cellular Location

Cell membrane; Multi-pass membrane protein. Apical cell membrane; Multi-pass membrane protein. Note=Also detected at the basolateral membrane and in subapical vesicles.

## Tissue Location

Expressed in brain, testis, placenta, pancreas, esophagus and prostate. Expressed in squamous epithelial tissues (at protein level). Expressed in kidney.

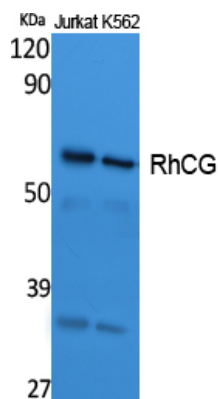
## Background

---

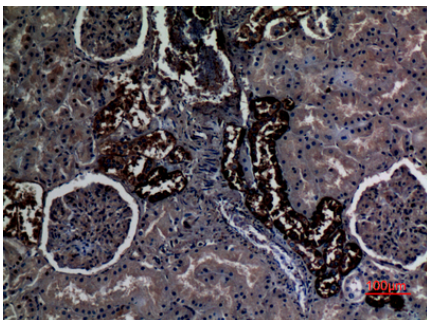
Functions as an electroneutral and bidirectional ammonium transporter. May regulate transepithelial ammonia secretion.

## Images

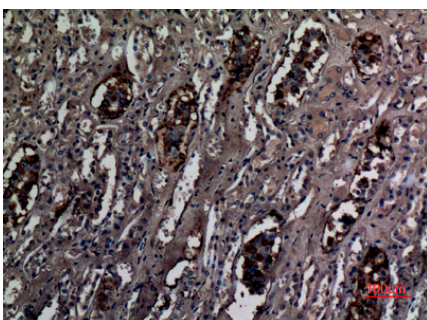
---



Western Blot analysis of extracts from Jurkat, K562 cells, using RhCG Polyclonal Antibody.. Secondary antibody was diluted at 1:20000



Immunohistochemical analysis of paraffin-embedded human-kidney, antibody was diluted at 1:100



Immunohistochemical analysis of paraffin-embedded human-kidney, antibody was diluted at 1:100

Please note: All products are 'FOR RESEARCH USE ONLY. NOT FOR USE IN DIAGNOSTIC OR THERAPEUTIC PROCEDURES'.