

Smad5 Polyclonal Antibody

Catalog # AP73270

Product Information

Application	WB, IHC-P, IF, ICC, E
Primary Accession	Q99717
Reactivity	Human, Rat
Host	Rabbit
Clonality	Polyclonal
Calculated MW	52258

Additional Information

Gene ID	4090
Other Names	SMAD5; MADH5; Mothers against decapentaplegic homolog 5; MAD homolog 5; Mothers against DPP homolog 5; JV5-1; SMAD family member 5; SMAD 5; Smad5; hSmad5
Dilution	WB~~Western Blot: 1/500 - 1/2000. IHC-p: 1:100-300 ELISA: 1/40000. Not yet tested in other applications. IHC-P~~Western Blot: 1/500 - 1/2000. IHC-p: 1:100-300 ELISA: 1/40000. Not yet tested in other applications. IF~~1:50~200 ICC~~N/A E~~N/A
Format	Liquid in PBS containing 50% glycerol, 0.5% BSA and 0.09% (W/V) sodium azide.
Storage Conditions	-20°C

Protein Information

Name	SMAD5 (HGNC:6771)
Synonyms	MADH5
Function	Transcriptional regulator that plays a role in various cellular processes including embryonic development, cell differentiation, angiogenesis and tissue homeostasis (PubMed: 12064918 , PubMed: 16516194). Upon BMP ligand binding to their receptors at the cell surface, is phosphorylated by activated type I BMP receptors (BMPRI) and associates with SMAD4 to form a heteromeric complex which translocates into the nucleus acting as transcription factor (PubMed: 9442019). In turn, the hetero-trimeric complex recognizes cis- regulatory elements containing Smad Binding Elements (SBEs) to modulate the outcome of the signaling network (PubMed: 33510867). Non-phosphorylated SMAD5 has a cytoplasmic role in energy metabolism regulation by promoting mitochondrial respiration and glycolysis in response to cytoplasmic pH changes (PubMed: 28675158). Mechanistically, interacts

with hexokinase 1/HK1 and thereby accelerates glycolysis (PubMed:[28675158](#)).

Cellular Location

Cytoplasm. Nucleus Mitochondrion. Note=Cytoplasmic in the absence of ligand. Migrates to the nucleus when complexed with SMAD4

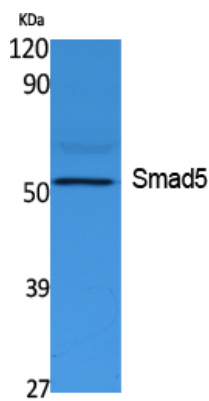
Tissue Location

Ubiquitous.

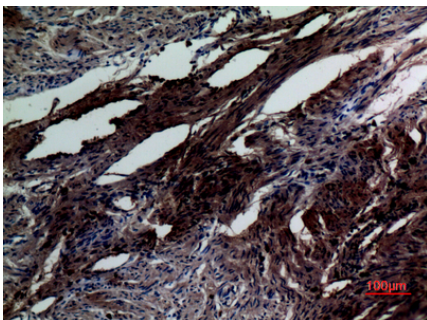
Background

Transcriptional modulator activated by BMP (bone morphogenetic proteins) type 1 receptor kinase. SMAD5 is a receptor-regulated SMAD (R-SMAD).

Images



Western Blot analysis of extracts from K562 cells, using Smad5 Polyclonal Antibody.. Secondary antibody was diluted at 1:20000



Immunohistochemical analysis of paraffin-embedded human-uterus, antibody was diluted at 1:100

Please note: All products are 'FOR RESEARCH USE ONLY. NOT FOR USE IN DIAGNOSTIC OR THERAPEUTIC PROCEDURES'.