

GABAA Rε Polyclonal Antibody

Catalog # AP73251

Product Information

Application	WB
Primary Accession	P78334
Reactivity	Human
Host	Rabbit
Clonality	Polyclonal
Calculated MW	57972

Additional Information

Gene ID	2564
Other Names	GABRE; Gamma-aminobutyric acid receptor subunit epsilon; GABA(A) receptor subunit epsilon
Dilution	WB~~Western Blot: 1/500 - 1/2000. ELISA: 1/20000. Not yet tested in other applications.
Format	Liquid in PBS containing 50% glycerol, 0.5% BSA and 0.09% (W/V) sodium azide.
Storage Conditions	-20°C

Protein Information

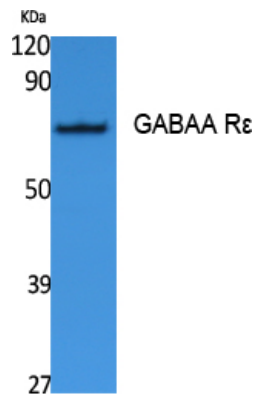
Name	GABRE (HGNC:4085)
Function	Epsilon subunit of the heteropentameric ligand-gated chloride channel gated by gamma-aminobutyric acid (GABA), a major inhibitory neurotransmitter in the brain (PubMed: 16412217 , PubMed: 9882711). GABA- gated chloride channels, also named GABA(A) receptors (GABAAR), consist of five subunits arranged around a central pore and contain GABA active binding site(s) located at the alpha and beta subunit interfaces (By similarity). When activated by GABA, GABAARs selectively allow the flow of chloride anions across the cell membrane down their electrochemical gradient (By similarity). GABAARs containing epsilon subunits also permit spontaneous chloride channel activity while preserving the structural information required for GABA-gated openings (PubMed: 16412217 , PubMed: 9882711). GABAARs containing epsilon subunit may regulate cardiac function (Probable).
Cellular Location	Cell membrane; Multi-pass membrane protein. Postsynaptic cell membrane; Multi-pass membrane protein
Tissue Location	Expressed in many tissues (PubMed:9339354). Highest levels of expression in

adult heart and placenta (PubMed:9084408, PubMed:9339354, PubMed:9882711).

Background

GABA, the major inhibitory neurotransmitter in the vertebrate brain, mediates neuronal inhibition by binding to the GABA/benzodiazepine receptor and opening an integral chloride channel.

Images



Western Blot analysis of extracts from Jurkat cells, using GABAA Rα Polyclonal Antibody.. Secondary antibody was diluted at 1:20000

Please note: All products are 'FOR RESEARCH USE ONLY. NOT FOR USE IN DIAGNOSTIC OR THERAPEUTIC PROCEDURES'.