

α -SMA Polyclonal Antibody

Catalog # AP73236

Product Information

Application	WB, IHC-P, IF, ICC, E
Primary Accession	P62736
Reactivity	Human, Mouse, Rat
Host	Rabbit
Clonality	Polyclonal
Calculated MW	42009

Additional Information

Gene ID	59
Other Names	ACTA2; ACTSA; ACTVS; GIG46; Actin; aortic smooth muscle; Alpha-actin-2; Cell growth-inhibiting gene 46 protein
Dilution	WB~~Western Blot: 1/500 - 1/2000. Immunohistochemistry: 1/100 - 1/300. ELISA: 1/20000. Not yet tested in other applications. IHC-P~~N/A IF~~1:50~200 ICC~~N/A E~~N/A
Format	Liquid in PBS containing 50% glycerol, 0.5% BSA and 0.05% sodium azide.
Storage Conditions	-20°C

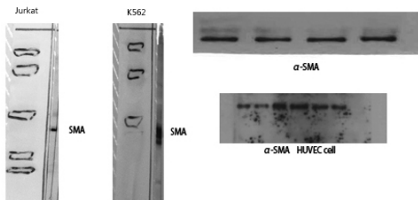
Protein Information

Name	ACTA2
Synonyms	ACTSA, ACTVS
Function	Actins are highly conserved proteins that are involved in various types of cell motility and are ubiquitously expressed in all eukaryotic cells.
Cellular Location	Cytoplasm, cytoskeleton.

Background

Actins are highly conserved proteins that are involved in various types of cell motility and are ubiquitously expressed in all eukaryotic cells.

Images



Western Blot analysis of various cells using α -SMA
Polyclonal Antibody diluted at 1 : 500. Secondary
antibody was diluted at 1:20000

Please note: All products are 'FOR RESEARCH USE ONLY. NOT FOR USE IN DIAGNOSTIC OR THERAPEUTIC PROCEDURES'.