

EEA1 Polyclonal Antibody

Catalog # AP73211

Product Information

Application	WB
Primary Accession	Q15075
Reactivity	Human, Mouse
Host	Rabbit
Clonality	Polyclonal
Calculated MW	162466

Additional Information

Gene ID	8411
Other Names	EEA1; ZFYVE2; Early endosome antigen 1; Endosome-associated protein p162; Zinc finger FYVE domain-containing protein 2
Dilution	WB~~Western Blot: 1/500 - 1/2000. ELISA: 1/20000. Not yet tested in other applications.
Format	Liquid in PBS containing 50% glycerol, 0.5% BSA and 0.09% (W/V) sodium azide.
Storage Conditions	-20°C

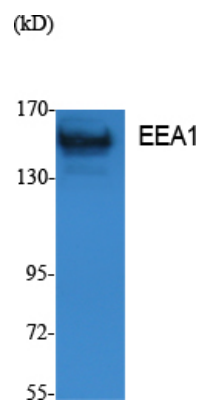
Protein Information

Name	EEA1
Synonyms	ZFYVE2
Function	Binds phospholipid vesicles containing phosphatidylinositol 3-phosphate and participates in endosomal trafficking.
Cellular Location	Cytoplasm. Early endosome membrane; Peripheral membrane protein

Background

Binds phospholipid vesicles containing phosphatidylinositol 3-phosphate and participates in endosomal trafficking.

Images



Western Blot analysis of extracts from K562 cells, using EEA1 Polyclonal Antibody.. Secondary antibody was diluted at 1:20000

Please note: All products are 'FOR RESEARCH USE ONLY. NOT FOR USE IN DIAGNOSTIC OR THERAPEUTIC PROCEDURES'.