

ALDH3A1 Polyclonal Antibody

Catalog # AP73208

Product Information

Application	WB
Primary Accession	P30838
Reactivity	Human, Rat
Host	Rabbit
Clonality	Polyclonal
Calculated MW	50395

Additional Information

Gene ID	218
Other Names	ALDH3A1; ALDH3; Aldehyde dehydrogenase, dimeric NADP-preferring; ALDHIII; Aldehyde dehydrogenase 3; Aldehyde dehydrogenase family 3 member A1
Dilution	WB~~Western Blot: 1/500 - 1/2000. ELISA: 1/20000. Not yet tested in other applications.
Format	Liquid in PBS containing 50% glycerol, 0.5% BSA and 0.09% (W/V) sodium azide.
Storage Conditions	-20°C

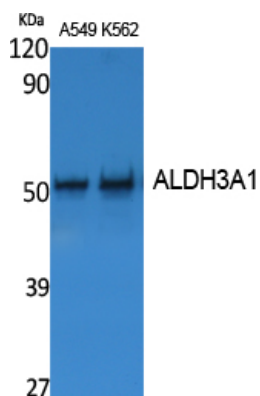
Protein Information

Name	ALDH3A1
Synonyms	ALDH3
Function	ALDHs play a major role in the detoxification of alcohol- derived acetaldehyde (Probable). They are involved in the metabolism of corticosteroids, biogenic amines, neurotransmitters, and lipid peroxidation (Probable). Oxidizes medium and long chain aldehydes into non-toxic fatty acids (PubMed: 1737758). Preferentially oxidizes aromatic aldehyde substrates (PubMed: 1737758). Comprises about 50 percent of corneal epithelial soluble proteins (By similarity). May play a role in preventing corneal damage caused by ultraviolet light (By similarity).
Cellular Location	Cytoplasm {ECO:0000250 UniProtKB:P47739}.
Tissue Location	High levels in stomach, esophagus and lung; low level in the liver and kidney

Background

ALDHs play a major role in the detoxification of alcohol-derived acetaldehyde (Probable). They are involved in the metabolism of corticosteroids, biogenic amines, neurotransmitters, and lipid peroxidation (Probable). Oxidizes medium and long chain aldehydes into non-toxic fatty acids (PubMed:[1737758](#)). Preferentially oxidizes aromatic aldehyde substrates (PubMed:[1737758](#)). Comprises about 50 percent of corneal epithelial soluble proteins (By similarity). May play a role in preventing corneal damage caused by ultraviolet light (By similarity).

Images



Western Blot analysis of extracts from A549, K562 cells, using ALDH3A1 Polyclonal Antibody.. Secondary antibody was diluted at 1:20000

Please note: All products are 'FOR RESEARCH USE ONLY. NOT FOR USE IN DIAGNOSTIC OR THERAPEUTIC PROCEDURES'.