

# KRT9 Antibody (Center K317)

Affinity Purified Rabbit Polyclonal Antibody (Pab)

Catalog # AP7312d

## Product Information

---

<b>Application</b>	WB, IHC-P, FC, E
<b>Primary Accession</b>	<a href="#">P35527</a>
<b>Reactivity</b>	Human
<b>Host</b>	Rabbit
<b>Clonality</b>	Polyclonal
<b>Isotype</b>	Rabbit IgG
<b>Clone Names</b>	RB18418
<b>Calculated MW</b>	62064
<b>Antigen Region</b>	302-331

## Additional Information

---

<b>Gene ID</b>	3857
<b>Other Names</b>	Keratin, type I cytoskeletal 9, Cytokeratin-9, CK-9, Keratin-9, K9, KRT9
<b>Target/Specificity</b>	This KRT9 antibody is generated from rabbits immunized with a KLH conjugated synthetic peptide between 302-331 amino acids from the Central region of human KRT9.
<b>Dilution</b>	WB~~1:1000 IHC-P~~1:100~500 FC~~1:10~50 E~~Use at an assay dependent concentration.
<b>Format</b>	Purified polyclonal antibody supplied in PBS with 0.09% (W/V) sodium azide. This antibody is purified through a protein A column, followed by peptide affinity purification.
<b>Storage</b>	Maintain refrigerated at 2-8°C for up to 2 weeks. For long term storage store at -20°C in small aliquots to prevent freeze-thaw cycles.
<b>Precautions</b>	KRT9 Antibody (Center K317) is for research use only and not for use in diagnostic or therapeutic procedures.

## Protein Information

---

<b>Name</b>	KRT9
<b>Function</b>	May serve an important special function either in the mature palmar and plantar skin tissue or in the morphogenetic program of the formation of these tissues. Plays a role in keratin filament assembly.

## Tissue Location

Expressed in the terminally differentiated epidermis of palms and soles.

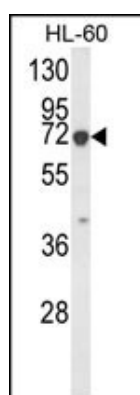
## Background

KRT9 is the type I keratin 9, an intermediate filament chain expressed only in the terminally differentiated epidermis of palms and soles. Mutations in this protein cause epidermolytic palmoplantar keratoderma.

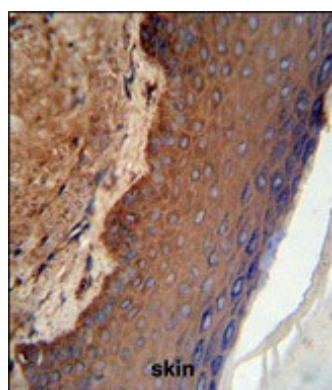
## References

Feng,W., Han,W. Eur J Dermatol 18 (4), 387-390 (2008)  
Zhao,J.J., Zhang,Z.H. Int. J. Dermatol. 47 (6), 634-637 (2008)  
Torchard,D., Blanchet-Bardon,C. Nat. Genet. 6 (1), 106-110 (1994)  
Reis,A., Kuster,W. Hum. Genet. 90 (1-2), 113-116 (1992)

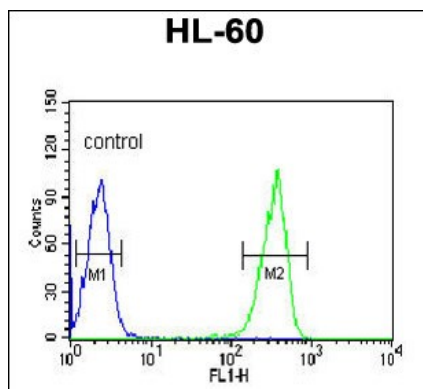
## Images



Western blot analysis of KRT9 Antibody (Center K317) (Cat. #AP7312d) in HL-60 cell line lysates (35ug/lane). KRT9 (arrow) was detected using the purified Pab.



KRT9 Antibody (Center K317) (Cat. #AP7312d) IHC analysis in formalin fixed and paraffin embedded skin tissue followed by peroxidase conjugation of the secondary antibody and DAB staining. This data demonstrates the use of the KRT9 Antibody (Center K317) for immunohistochemistry. Clinical relevance has not been evaluated.



KRT9 Antibody (Center K317) (Cat. #AP7312d) flow cytometric analysis of HL-60 cells (right histogram) compared to a negative control cell (left histogram). FITC-conjugated goat-anti-rabbit secondary antibodies were used for the analysis.