

KRT9 Antibody (Center K444)

Purified Rabbit Polyclonal Antibody (Pab)

Catalog # AP7312c

Product Information

Application	WB, IHC-P, E
Primary Accession	P35527
Reactivity	Human
Host	Rabbit
Clonality	Polyclonal
Isotype	Rabbit IgG
Clone Names	RB18419
Calculated MW	62064
Antigen Region	429-456

Additional Information

Gene ID	3857
Other Names	Keratin, type I cytoskeletal 9, Cytokeratin-9, CK-9, Keratin-9, K9, KRT9
Target/Specificity	This KRT9 antibody is generated from rabbits immunized with a KLH conjugated synthetic peptide between 429-456 amino acids from the Central region of human KRT9.
Dilution	WB~~1:1000 IHC-P~~1:100~500 E~~Use at an assay dependent concentration.
Format	Purified polyclonal antibody supplied in PBS with 0.09% (W/V) sodium azide. This antibody is prepared by Saturated Ammonium Sulfate (SAS) precipitation followed by dialysis against PBS.
Storage	Maintain refrigerated at 2-8°C for up to 2 weeks. For long term storage store at -20°C in small aliquots to prevent freeze-thaw cycles.
Precautions	KRT9 Antibody (Center K444) is for research use only and not for use in diagnostic or therapeutic procedures.

Protein Information

Name	KRT9
Function	May serve an important special function either in the mature palmar and plantar skin tissue or in the morphogenetic program of the formation of these tissues. Plays a role in keratin filament assembly.
Tissue Location	Expressed in the terminally differentiated epidermis of palms and soles.

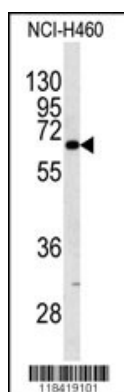
Background

KRT9 is the type I keratin 9, an intermediate filament chain expressed only in the terminally differentiated epidermis of palms and soles. Mutations in this protein cause epidermolytic palmoplantar keratoderma.

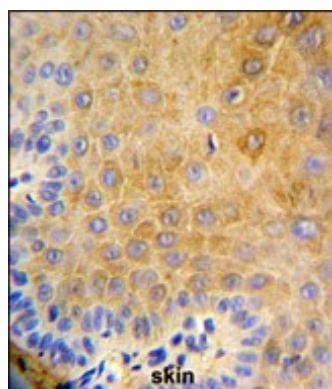
References

Feng,W., Han,W. Eur J Dermatol 18 (4), 387-390 (2008)
Zhao,J.J., Zhang,Z.H. Int. J. Dermatol. 47 (6), 634-637 (2008)
Torchard,D., Blanchet-Bardon,C. Nat. Genet. 6 (1), 106-110 (1994)
Reis,A., Kuster,W. Hum. Genet. 90 (1-2), 113-116 (1992)

Images



Western blot analysis of KRT9 antibody (Center K444) (Cat.#AP7312c) in NCI-H460 cell line lysates (35ug/lane). KRT9 (arrow) was detected using the purified Pab.



Formalin-fixed and paraffin-embedded human skin reacted with KRT9 Antibody (Center K444), which was peroxidase-conjugated to the secondary antibody, followed by DAB staining. This data demonstrates the use of this antibody for immunohistochemistry; clinical relevance has not been evaluated.

Please note: All products are 'FOR RESEARCH USE ONLY. NOT FOR USE IN DIAGNOSTIC OR THERAPEUTIC PROCEDURES'.