

VIM Polyclonal Antibody

Catalog # AP73061

Product Information

Application	WB, IHC-P, IF
Primary Accession	P08670
Reactivity	Human, Mouse, Rat
Host	Rabbit
Clonality	Polyclonal
Calculated MW	53652

Additional Information

Gene ID	7431
Other Names	VIM; Vimentin
Dilution	WB~~Western Blot: 1/500 - 1/2000. Immunohistochemistry: 1/100 - 1/300. Immunofluorescence: 1/200 - 1/1000. ELISA: 1/10000. Not yet tested in other applications. IHC-P~~Western Blot: 1/500 - 1/2000. Immunohistochemistry: 1/100 - 1/300. Immunofluorescence: 1/200 - 1/1000. ELISA: 1/10000. Not yet tested in other applications. IF~~1:50~200
Format	Liquid in PBS containing 50% glycerol, 0.5% BSA and 0.09% (W/V) sodium azide.
Storage Conditions	-20°C

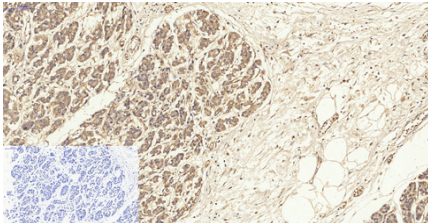
Protein Information

Name	VIM (HGNC:12692)
Function	Vimentins are class-III intermediate filaments found in various non-epithelial cells, especially mesenchymal cells. Vimentin is attached to the nucleus, endoplasmic reticulum, and mitochondria, either laterally or terminally. Plays a role in cell directional movement, orientation, cell sheet organization and Golgi complex polarization at the cell migration front (By similarity). Protects SCRIB from proteasomal degradation and facilitates its localization to intermediate filaments in a cell contact-mediated manner (By similarity).
Cellular Location	Cytoplasm. Cytoplasm, cytoskeleton. Nucleus matrix {ECO:0000250 UniProtKB:P31000}. Cell membrane {ECO:0000250 UniProtKB:P20152}
Tissue Location	Highly expressed in fibroblasts, some expression in T- and B-lymphocytes, and little or no expression in Burkitt's lymphoma cell lines. Expressed in many

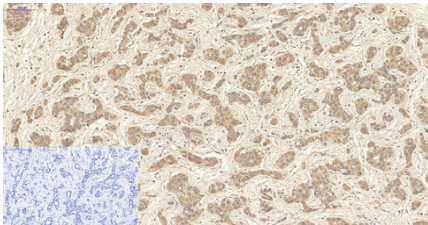
Background

Vimentins are class-III intermediate filaments found in various non-epithelial cells, especially mesenchymal cells. Vimentin is attached to the nucleus, endoplasmic reticulum, and mitochondria, either laterally or terminally.

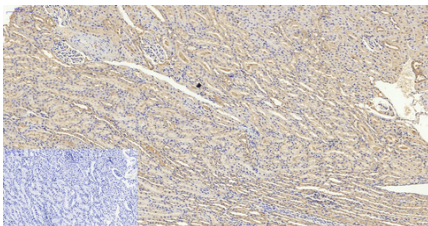
Images



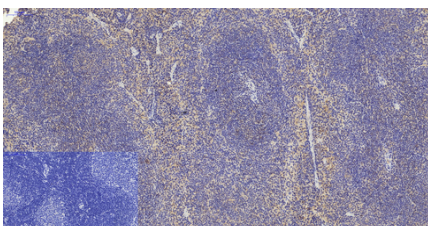
Immunohistochemical analysis of paraffin-embedded human-stomach-cancer tissue. 1,VIM Polyclonal Antibody was diluted at 1:200(4°,overnight). 2, Sodium citrate pH 6.0 was used for antigen retrieval(>98°C,20min). 3,Secondary antibody was diluted at 1:200(room temperature, 30min) Negative control was used by secondary antibody only.)



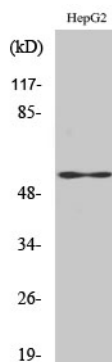
Immunohistochemical analysis of paraffin-embedded human-stomach-cancer tissue. 1,VIM Polyclonal Antibody was diluted at 1:200(4°,overnight). 2, Sodium citrate pH 6.0 was used for antigen retrieval(>98°C,20min). 3,Secondary antibody was diluted at 1:200(room temperature, 30min) Negative control was used by secondary antibody only.)



Immunohistochemical analysis of paraffin-embedded human-stomach-cancer tissue. 1,VIM Polyclonal Antibody was diluted at 1:200(4°,overnight). 2, Sodium citrate pH 6.0 was used for antigen retrieval(>98°C,20min). 3,Secondary antibody was diluted at 1:200(room temperature, 30min) Negative control was used by secondary antibody only.)

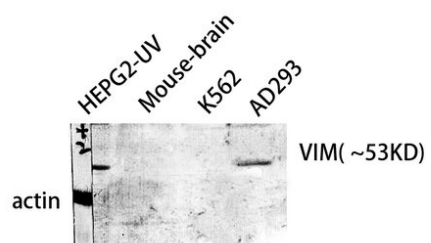


Immunohistochemical analysis of paraffin-embedded human-liver-cancer tissue. 1,VIM Polyclonal Antibody was diluted at 1:200(4°,overnight). 2, Sodium citrate pH 6.0 was used for antigen retrieval(>98°C,20min). 3,Secondary antibody was diluted at 1:200(room temperature, 30min) Negative control was used by secondary antibody only.)



Immunohistochemical analysis of paraffin-embedded RAT-KIDNEY tissue. 1,VIM Polyclonal Antibody was diluted at 1:200(4°,overnight). 2, Sodium citrate pH 6.0 was used for antigen retrieval(>98°C,20min). 3,Secondary antibody was diluted at 1:200(room temperature, 30min) Negative control was used by secondary antibody only.)

Immunohistochemical analysis of paraffin-embedded mouse-spleen tissue. 1,VIM Polyclonal Antibody was



diluted at 1:200(4°,overnight). 2, Sodium citrate pH 6.0 was used for antigen retrieval(>98°C,20min). 3,Secondary antibody was diluted at 1:200(room temperature, 30min) Negative control was used by secondary antibody only.)

Please note: All products are 'FOR RESEARCH USE ONLY. NOT FOR USE IN DIAGNOSTIC OR THERAPEUTIC PROCEDURES'.