

TWIK-3 Polyclonal Antibody

Catalog # AP72971

Product Information

Application	WB
Primary Accession	Q9Y2U2
Reactivity	Human
Host	Rabbit
Clonality	Polyclonal
Calculated MW	31947

Additional Information

Gene ID	10089
Other Names	KCNK7; Potassium channel subfamily K member 7
Dilution	WB~~Western Blot: 1/500 - 1/2000. ELISA: 1/40000. Not yet tested in other applications.
Format	Liquid in PBS containing 50% glycerol, 0.5% BSA and 0.09% (W/V) sodium azide.
Storage Conditions	-20°C

Protein Information

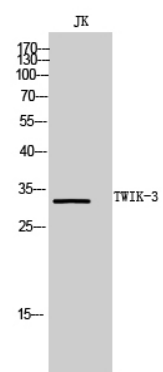
Name	KCNK7
Function	Probable potassium channel subunit. No channel activity observed in vitro as protein remains in the endoplasmic reticulum. May need to associate with an as yet unknown partner in order to reach the plasma membrane.
Cellular Location	Membrane; Multi-pass membrane protein

Background

Probable potassium channel subunit. No channel activity observed in vitro as protein remains in the endoplasmic reticulum. May need to associate with an as yet unknown partner in order to reach the plasma membrane.

Images

Western Blot analysis of JK cells using TWIK-3 Polyclonal



Antibody. Secondary antibody was diluted at 1:20000

Please note: All products are 'FOR RESEARCH USE ONLY. NOT FOR USE IN DIAGNOSTIC OR THERAPEUTIC PROCEDURES'.