

THC2 Polyclonal Antibody

Catalog # AP72825

Product Information

Application	WB, IHC-P, IF, ICC, E
Primary Accession	Q96GX5
Reactivity	Human, Mouse
Host	Rabbit
Clonality	Polyclonal
Calculated MW	97319

Additional Information

Gene ID	84930
Other Names	MASTL; GW; GWL; THC2; Serine/threonine-protein kinase greatwall; GW; GWL; hGWL; Microtubule-associated serine/threonine-protein kinase-like; MAST-L
Dilution	WB~~Western Blot: 1/500 - 1/2000. Immunohistochemistry: 1/100 - 1/300. ELISA: 1/20000. Not yet tested in other applications. IHC-P~~N/A IF~~1:50~200 ICC~~N/A E~~N/A
Format	Liquid in PBS containing 50% glycerol, 0.5% BSA and 0.09% (W/V) sodium azide.
Storage Conditions	-20°C

Protein Information

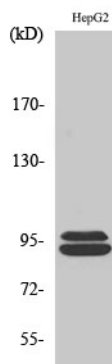
Name	MASTL
Synonyms	GW, GWL, THC2
Function	Serine/threonine kinase that plays a key role in M phase by acting as a regulator of mitosis entry and maintenance (PubMed: 19680222). Acts by promoting the inactivation of protein phosphatase 2A (PP2A) during M phase: does not directly inhibit PP2A but acts by mediating phosphorylation and subsequent activation of ARPP19 and ENSA at 'Ser-62' and 'Ser-67', respectively (PubMed: 38123684). ARPP19 and ENSA are phosphatase inhibitors that specifically inhibit the PPP2R2D (PR55-delta) subunit of PP2A. Inactivation of PP2A during M phase is essential to keep cyclin-B1-CDK1 activity high (PubMed: 20818157). Following DNA damage, it is also involved in checkpoint recovery by being inhibited. Phosphorylates histone protein in vitro; however such activity is unsure in vivo. May be involved in megakaryocyte differentiation.
Cellular Location	Cytoplasm, cytoskeleton, microtubule organizing center, centrosome.

Nucleus. Cleavage furrow. Note=During interphase is mainly nuclear, upon nuclear envelope breakdown localizes at the cytoplasm and during mitosis at the centrosomes. Upon mitotic exit moves to the cleavage furrow.

Background

Serine/threonine kinase that plays a key role in M phase by acting as a regulator of mitosis entry and maintenance. Acts by promoting the inactivation of protein phosphatase 2A (PP2A) during M phase: does not directly inhibit PP2A but acts by mediating phosphorylation and subsequent activation of ARPP19 and ENSA at 'Ser-62' and 'Ser-67', respectively. ARPP19 and ENSA are phosphatase inhibitors that specifically inhibit the PPP2R2D (PR55-delta) subunit of PP2A. Inactivation of PP2A during M phase is essential to keep cyclin-B1-CDK1 activity high. Following DNA damage, it is also involved in checkpoint recovery by being inhibited. Phosphorylates histone protein in vitro; however such activity is unsure in vivo. May be involved in megakaryocyte differentiation.

Images



Western Blot analysis of various cells using THC2 Polyclonal Antibody

Please note: All products are 'FOR RESEARCH USE ONLY. NOT FOR USE IN DIAGNOSTIC OR THERAPEUTIC PROCEDURES'.