

PHB2 Antibody (Y248)

Affinity Purified Rabbit Polyclonal Antibody (Pab)
Catalog # AP7270e

Product Information

Application	WB, IHC-P-Leica, E
Primary Accession	Q99623
Other Accession	Q5XIH7 , O35129 , Q2HJ97 , NP_009204
Reactivity	Human, Mouse, Rat
Predicted	Rat, Bovine
Host	Rabbit
Clonality	Polyclonal
Isotype	Rabbit IgG
Clone Names	RB15576
Antigen Region	225-255

Additional Information

Other Names	Prohibitin-2, B-cell receptor-associated protein BAP37, D-prohibitin, Repressor of estrogen receptor activity, PHB2 {ECO:0000312 EMBL:AAH147661, ECO:0000312 HGNC:HGNC:30306}
Target/Specificity	This PHB2 antibody is generated from rabbits immunized with a KLH conjugated synthetic peptide between 225-255 amino acids from human PHB2.
Dilution	WB~~1:1000 IHC-P-Leica~~1:500 E~~Use at an assay dependent concentration.
Format	Purified polyclonal antibody supplied in PBS with 0.09% (W/V) sodium azide. This antibody is purified through a protein A column, followed by peptide affinity purification.
Storage	Maintain refrigerated at 2-8°C for up to 2 weeks. For long term storage store at -20°C in small aliquots to prevent freeze-thaw cycles.
Precautions	PHB2 Antibody (Y248) is for research use only and not for use in diagnostic or therapeutic procedures.

Protein Information

Background

PHB2 acts as a mediator of transcriptional repression by nuclear hormone receptors via recruitment of histone deacetylases. It functions as an estrogen receptor (ER)-selective coregulator that potentiates the

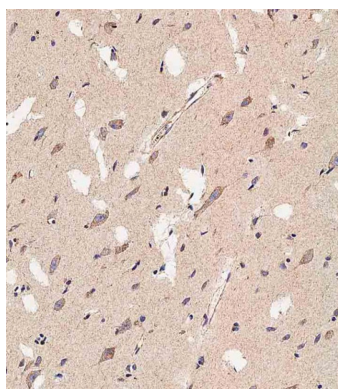
inhibitory activities of antiestrogens and represses the activity of estrogens. It competes with NCOA1 for modulation of ER transcriptional activity and is probably involved in regulating mitochondrial respiration activity and in aging.

References

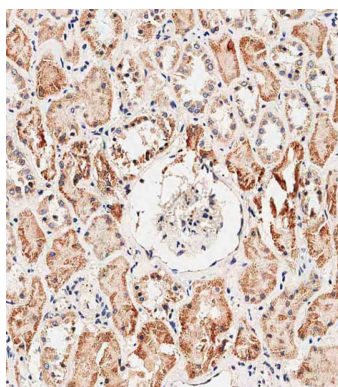
Takata,H., Curr. Biol. 17 (15), 1356-1361 (2007)

Kasashima,K., J. Biol. Chem. 281 (47), 36401-36410 (2006)

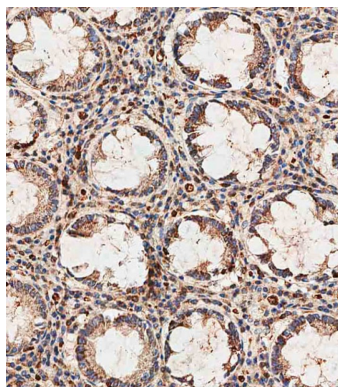
Images



Immunohistochemical analysis of AP7270E on paraffin-embedded human brain tissue was performed on the Leica® BOND RXm. Tissue was fixed with formaldehyde at room temperature. Heat induced epitope retrieval was performed by EDTA buffer (pH9. 0). Samples were incubated with primary antibody(1:500) for 15min at room temperature. Leica Bond Polymer Refine Detection was used as the secondary antibody.

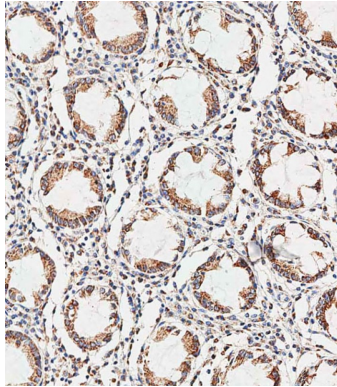
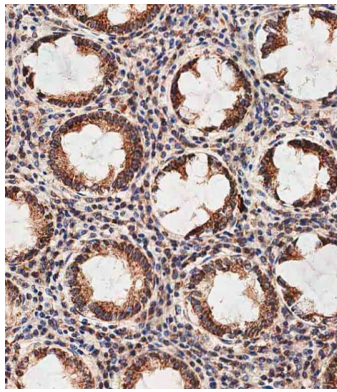


Immunohistochemical analysis of AP7270E on paraffin-embedded human kidney tissue was performed on the Leica® BOND RXm. Tissue was fixed with formaldehyde at room temperature. Heat induced epitope retrieval was performed by EDTA buffer (pH9. 0). Samples were incubated with primary antibody(1:250) for 15min at room temperature. Leica Bond Polymer Refine Detection was used as the secondary antibody.

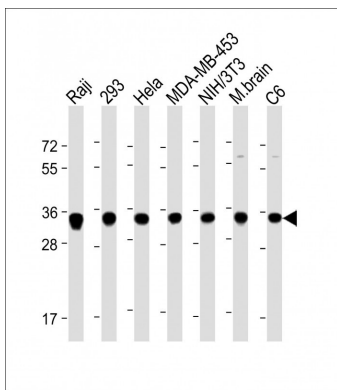


Immunohistochemical analysis of AP7270E on paraffin-embedded human colon tissue was performed on the Leica® BOND RXm. Tissue was fixed with formaldehyde at room temperature. Heat induced epitope retrieval was performed by EDTA buffer (pH9. 0). Samples were incubated with primary antibody(1:250) for 15min at room temperature. Leica Bond Polymer Refine Detection was used as the secondary antibody.

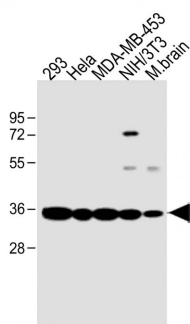
Immunohistochemical analysis of AP7270E on paraffin-embedded human colon tissue was performed on the Leica® BOND RXm. Tissue was fixed with formaldehyde at room temperature. Heat induced epitope retrieval was performed by EDTA buffer (pH9. 0). Samples were incubated with primary antibody(1:250) for 15min at room temperature. Leica Bond Polymer Refine Detection was used as the secondary antibody.



Immunohistochemical analysis of paraffin-embedded human colon tissue using AP7270E performed on the Leica® BOND RXm. Tissue was fixed with formaldehyde at room temperature, antigen retrieval was by heat mediation with a EDTA buffer (pH9. 0). Samples were incubated with primary antibody(1:500) for 1 hours at room temperature. A undiluted biotinylated CRF Anti-Polyvalent HRP Polymer antibody was used as the secondary antibody.



All lanes : Anti-PHB2 Antibody (Y248) at 1:2000 dilution
 Lane 1: Raji whole cell lysate Lane 2: 293 whole cell lysate
 Lane 3: Hela whole cell lysate Lane 4: MDA-MB-453 whole cell lysate
 Lane 5: NIH/3T3 whole cell lysate Lane 6: Mouse brain lysate
 Lane 7: C6 whole cell lysate
 Lysates/proteins at 20 µg per lane. Secondary Goat Anti-Rabbit IgG, (H+L), Peroxidase conjugated at 1/10000 dilution. Predicted band size : 33 kDa Blocking/Dilution buffer: 5% NFDm/TBST.



All lanes : Anti-PHB2 Antibody (Y248) at 1:1000 dilution
 Lane 1: 293 whole cell lysate Lane 2: Hela whole cell lysate
 Lane 3: MDA-MB-453 whole cell lysate Lane 4: NIH/3T3 whole cell lysate
 Lane 5: mouse brain lysate
 Lysates/proteins at 20 µg per lane. Secondary Goat Anti-Rabbit IgG, (H+L), Peroxidase conjugated at 1/10000 dilution. Predicted band size : 33 kDa Blocking/Dilution buffer: 5% NFDm/TBST.

Please note: All products are 'FOR RESEARCH USE ONLY. NOT FOR USE IN DIAGNOSTIC OR THERAPEUTIC PROCEDURES'.