

Synuclein- γ Polyclonal Antibody

Catalog # AP72682

Product Information

Application	WB, IHC-P, IF, ICC, E
Primary Accession	O76070
Reactivity	Human, Rat, Mouse
Host	Rabbit
Clonality	Polyclonal
Calculated MW	13331

Additional Information

Gene ID	6623
Other Names	SNCG; BCSG1; PERSYN; PRSN; Gamma-synuclein; Breast cancer-specific gene 1 protein; Persyn; Synoretin; SR
Dilution	WB--Western Blot: 1/500 - 1/2000. Immunohistochemistry: 1/100 - 1/300. ELISA: 1/10000. Not yet tested in other applications. IHC-P--N/A IF--1:50~200 ICC--N/A E--N/A
Format	Liquid in PBS containing 50% glycerol, 0.5% BSA and 0.09% (W/V) sodium azide.
Storage Conditions	-20°C

Protein Information

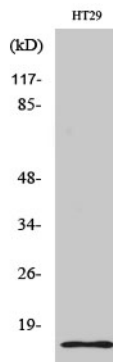
Name	SNCG
Synonyms	BCSG1, PERSYN, PRSN
Function	Plays a role in neurofilament network integrity. May be involved in modulating axonal architecture during development and in the adult. In vitro, increases the susceptibility of neurofilament-H to calcium-dependent proteases (By similarity). May also function in modulating the keratin network in skin. Activates the MAPK and Elk-1 signal transduction pathway (By similarity).
Cellular Location	Cytoplasm, perinuclear region. Cytoplasm, cytoskeleton, microtubule organizing center, centrosome. Cytoplasm, cytoskeleton, spindle. Note=Associated with centrosomes in several interphase cells. In mitotic cells, localized to the poles of the spindle
Tissue Location	Highly expressed in brain, particularly in the substantia nigra. Also expressed in the corpus callosum, heart, skeletal muscle, ovary, testis, colon and spleen.

Weak expression in pancreas, kidney and lung

Background

Plays a role in neurofilament network integrity. May be involved in modulating axonal architecture during development and in the adult. In vitro, increases the susceptibility of neurofilament-H to calcium-dependent proteases (By similarity). May also function in modulating the keratin network in skin. Activates the MAPK and Elk-1 signal transduction pathway (By similarity).

Images



Western Blot analysis of various cells using Synuclein-y Polyclonal Antibody

Please note: All products are 'FOR RESEARCH USE ONLY. NOT FOR USE IN DIAGNOSTIC OR THERAPEUTIC PROCEDURES'.