

# Syntaxin 1 Polyclonal Antibody

Catalog # AP72676

## Product Information

<b>Application</b>	WB, IHC-P, IF, ICC, E
<b>Primary Accession</b>	<a href="#">Q16623</a>
<b>Reactivity</b>	Human, Mouse, Rat, Monkey
<b>Host</b>	Rabbit
<b>Clonality</b>	Polyclonal

## Additional Information

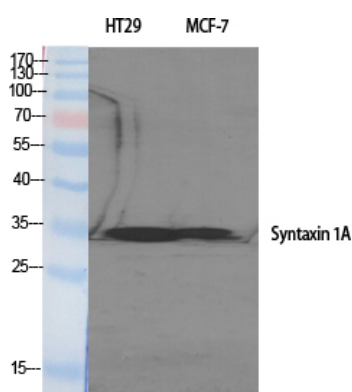
<b>Other Names</b>	STX1A; STX1; Syntaxin-1A; Neuron-specific antigen HPC-1
<b>Dilution</b>	WB~Western Blot: 1/500 - 1/2000. Immunohistochemistry: 1/100 - 1/300. Immunofluorescence: 1/200 - 1/1000. ELISA: 1/20000. Not yet tested in other applications. IHC-P~N/A IF~1:50~200 ICC~N/A E~N/A
<b>Format</b>	Liquid in PBS containing 50% glycerol, 0.5% BSA and 0.09% (W/V) sodium azide.
<b>Storage Conditions</b>	-20°C

## Protein Information

### Background

Plays a role in hormone and neurotransmitter exocytosis (By similarity). Potentially involved in docking of synaptic vesicles at presynaptic active zones. May mediate Ca(2+)- regulation of exocytosis acrosomal reaction in sperm.

### Images



Western Blot analysis of various cells using Syntaxin 1 Polyclonal Antibody

Please note: All products are 'FOR RESEARCH USE ONLY. NOT FOR USE IN DIAGNOSTIC OR THERAPEUTIC PROCEDURES'.