

Somatostatin Polyclonal Antibody

Catalog # AP72548

Product Information

Application	WB, IHC-P, IF, ICC, E
Primary Accession	P61278
Reactivity	Human, Mouse, Rat
Host	Rabbit
Clonality	Polyclonal
Calculated MW	12736

Additional Information

Gene ID	6750
Other Names	SST; Somatostatin; Growth hormone release-inhibiting factor
Dilution	WB~~Western Blot: 1/500 - 1/2000. Immunohistochemistry: 1/100 - 1/300. ELISA: 1/5000. Not yet tested in other applications. IHC-P~~Western Blot: 1/500 - 1/2000. Immunohistochemistry: 1/100 - 1/300. ELISA: 1/5000. Not yet tested in other applications. IF~~1:50~200 ICC~~N/A E~~N/A
Format	Liquid in PBS containing 50% glycerol, 0.5% BSA and 0.09% (W/V) sodium azide.
Storage Conditions	-20°C

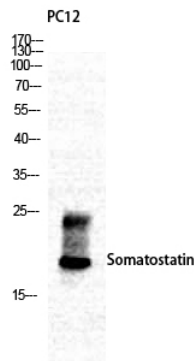
Protein Information

Name	SST
Function	[Somatostatin-14]: Inhibits the secretion of pituitary hormones, including that of growth hormone/somatotropin (GH1), PRL, ACTH, luteinizing hormone (LH) and TSH. Also impairs ghrelin- and GnRH- stimulated secretion of GH1 and LH; the inhibition of ghrelin- stimulated secretion of GH1 can be further increased by neuronostatin.
Cellular Location	Secreted {ECO:0000250 UniProtKB:P60042}.

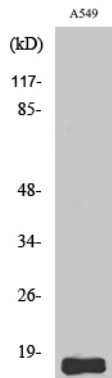
Background

Somatostatin inhibits the release of somatotropin.

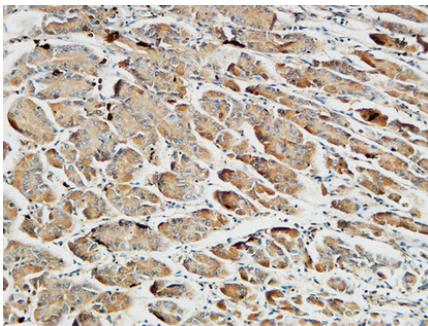
Images



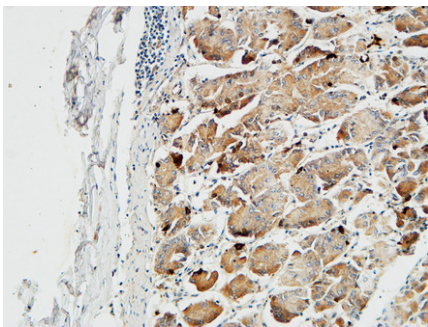
Western Blot analysis of various cells using Somatostatin Polyclonal Antibody



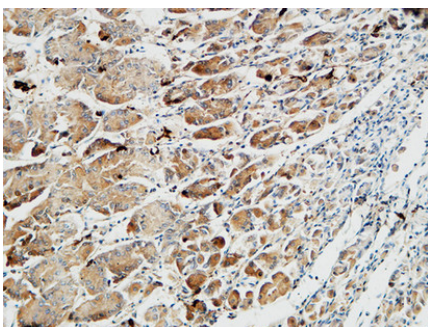
Western Blot analysis of A549 cells using Somatostatin Polyclonal Antibody



Immunohistochemical analysis of paraffin-embedded Human Gastric fundus. 1, Antibody was diluted at 1:200(4°,overnight). 2, High-pressure and temperature EDTA, pH8.0 was used for antigen retrieval. 3,Secondary antibody was diluted at 1:200(room temperature, 30min).



Immunohistochemical analysis of paraffin-embedded Human Gastric fundus. 1, Antibody was diluted at 1:200(4°,overnight). 2, High-pressure and temperature EDTA, pH8.0 was used for antigen retrieval. 3,Secondary antibody was diluted at 1:200(room temperature, 30min).



Immunohistochemical analysis of paraffin-embedded Human Gastric fundus. 1, Antibody was diluted at 1:200(4°,overnight). 2, High-pressure and temperature EDTA, pH8.0 was used for antigen retrieval. 3,Secondary antibody was diluted at 1:200(room temperature, 30min).