

SAF-A2 Polyclonal Antibody

Catalog # AP72391

Product Information

Application	WB, IHC-P, IF, ICC, E
Primary Accession	Q1KMD3
Reactivity	Human, Mouse
Host	Rabbit
Clonality	Polyclonal
Calculated MW	85105

Additional Information

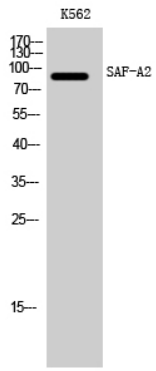
Gene ID	221092
Other Names	HNRNPUL2; HNRPUL2; Heterogeneous nuclear ribonucleoprotein U-like protein 2; Scaffold-attachment factor A2; SAF-A2
Dilution	WB~~Western Blot: 1/500 - 1/2000. Immunohistochemistry: 1/100 - 1/300. ELISA: 1/40000. Not yet tested in other applications. IHC-P~~N/A IF~~1:50~200 ICC~~N/A E~~N/A
Format	Liquid in PBS containing 50% glycerol, 0.5% BSA and 0.09% (W/V) sodium azide.
Storage Conditions	-20°C

Protein Information

Name	HNRNPUL2
Synonyms	HNRPUL2
Cellular Location	Nucleus {ECO:0000250 UniProtKB:Q00PI9}.

Images

Western Blot analysis of K562 cells using SAF-A2 Polyclonal Antibody cells nucleus extracted by Minute TM Cytoplasmic and Nuclear Fractionation kit (SC-003, Invent biotech, MN, USA).



Please note: All products are 'FOR RESEARCH USE ONLY. NOT FOR USE IN DIAGNOSTIC OR THERAPEUTIC PROCEDURES'.