

PSCA Polyclonal Antibody

Catalog # AP72060

Product Information

Application	WB, E, IHC-P
Primary Accession	O43653
Reactivity	Human, Mouse
Host	Rabbit
Clonality	Polyclonal
Calculated MW	11959

Additional Information

Gene ID	8000
Other Names	PSCA; Prostate stem cell antigen
Dilution	WB~~Western Blot: 1/500 - 1/2000. ELISA: 1/20000. Not yet tested in other applications. E~~N/A IHC-P~~N/A
Format	Liquid in PBS containing 50% glycerol, 0.5% BSA and 0.09% (W/V) sodium azide.
Storage Conditions	-20°C

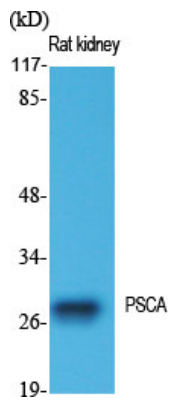
Protein Information

Name	PSCA
Function	May be involved in the regulation of cell proliferation. Has a cell-proliferation inhibition activity in vitro.
Cellular Location	Cell membrane; Lipid-anchor, GPI-anchor
Tissue Location	Highly expressed in prostate (basal, secretory and neuroendocrine epithelium cells). Also found in bladder (transitional epithelium), placenta (trophoblasts), stomach (neuroendocrine cells), colon (neuroendocrine cells) and kidney (collecting ducts) Overexpressed in prostate cancers and expression is correlated with tumor stage, grade and androgen-independence. Highly expressed in prostate cancer bone metastases. Expressed in gastric epithelial cells, mainly in the isthmus (at protein level). Not detected in normal intestinal epithelium (at protein level). Expressed in brain cortex; expression is significantly increased in the front cortex of Alzheimer disease patients.

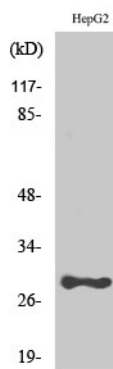
Background

May be involved in the regulation of cell proliferation. Has a cell-proliferation inhibition activity in vitro.

Images



Western Blot analysis of various cells using PSCA Polyclonal Antibody diluted at 1 : 1000



Western Blot analysis of HepG2 cells using PSCA Polyclonal Antibody diluted at 1 : 1000

Please note: All products are 'FOR RESEARCH USE ONLY. NOT FOR USE IN DIAGNOSTIC OR THERAPEUTIC PROCEDURES'.