

# PRPH Polyclonal Antibody

Catalog # AP72053

## Product Information

Application	WB, IHC-P
Primary Accession	<a href="#">P41219</a>
Reactivity	Human, Rat
Host	Rabbit
Clonality	Polyclonal
Calculated MW	53651

## Additional Information

Gene ID	5630
Other Names	PRPH; NEF4; PRPH1; Peripherin; Neurofilament 4
Dilution	WB~~Western Blot: 1/500 - 1/2000. Immunohistochemistry: 1/100 - 1/300. ELISA: 1/20000. Not yet tested in other applications. IHC-P~~N/A
Format	Liquid in PBS containing 50% glycerol, 0.5% BSA and 0.09% (W/V) sodium azide.
Storage Conditions	-20°C

## Protein Information

Name	PRPH
Synonyms	NEF4, PRPH1
Function	Class-III neuronal intermediate filament protein (By similarity). May form an independent structural network without the involvement of other neurofilaments or may cooperate with the neuronal intermediate filament proteins NEFL, NEFH, NEFM and INA to form a filamentous network (PubMed: <a href="#">15322088</a> , PubMed: <a href="#">15446584</a> ). Assembly of the neuronal intermediate filaments may be regulated by RAB7A (By similarity). Plays a role in the development of unmyelinated sensory neurons (By similarity). May be involved in axon elongation and axon regeneration after injury (By similarity). Inhibits neurite extension in type II spiral ganglion neurons in the cochlea (By similarity).
Cellular Location	Cytoplasm, cytoskeleton. Cell projection, axon {ECO:0000250 UniProtKB:P15331}. Perikaryon {ECO:0000250 UniProtKB:P15331}
Tissue Location	Expressed in the neurons of the outer hair cells in the organ of Corti and to a

lesser extent in type I spiral ganglion cells.

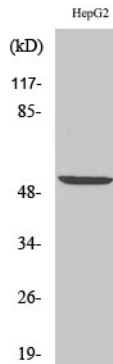
## Background

---

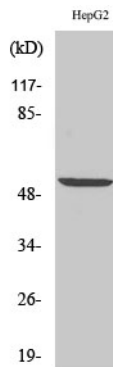
Class-III neuronal intermediate filament protein.

## Images

---



Western Blot analysis of various cells using PRPH Polyclonal Antibody diluted at 1 : 1000



Western Blot analysis of HepG2 cells using PRPH Polyclonal Antibody diluted at 1 : 1000

Please note: All products are 'FOR RESEARCH USE ONLY. NOT FOR USE IN DIAGNOSTIC OR THERAPEUTIC PROCEDURES'.