

PMS1 Polyclonal Antibody

Catalog # AP71986

Product Information

Application	WB, IHC-P
Primary Accession	P54277
Reactivity	Human
Host	Rabbit
Clonality	Polyclonal
Calculated MW	105830

Additional Information

Gene ID	5378
Other Names	PMS1; PMSL1; PMS1 protein homolog 1; DNA mismatch repair protein PMS1
Dilution	WB~~Western Blot: 1/500 - 1/2000. Immunohistochemistry: 1/100 - 1/300. ELISA: 1/10000. Not yet tested in other applications. IHC-P~~Western Blot: 1/500 - 1/2000. Immunohistochemistry: 1/100 - 1/300. ELISA: 1/10000. Not yet tested in other applications.
Format	Liquid in PBS containing 50% glycerol, 0.5% BSA and 0.09% (W/V) sodium azide.
Storage Conditions	-20°C

Protein Information

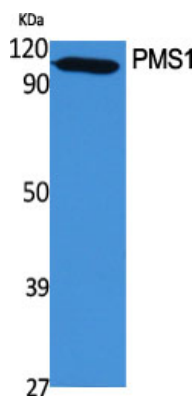
Name	PMS1
Synonyms	PMSL1
Function	Probably involved in the repair of mismatches in DNA.
Cellular Location	Nucleus {ECO:0000255 PROSITE-ProRule:PRU00267}.

Background

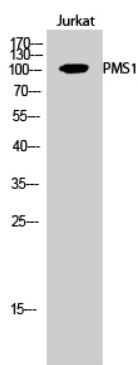
Probably involved in the repair of mismatches in DNA.

Images

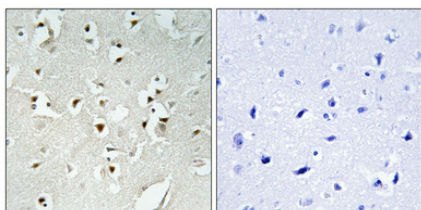
Western Blot analysis of various cells using PMS1



Polyclonal Antibody cells nucleus extracted by Minute TM Cytoplasmic and Nuclear Fractionation kit (SC-003, Inventbiotech, MN, USA).



Western Blot analysis of Jurkat cells using PMS1 Polyclonal Antibody cells nucleus extracted by Minute TM Cytoplasmic and Nuclear Fractionation kit (SC-003, Inventbiotech, MN, USA).



Immunohistochemical analysis of paraffin-embedded Human brain. Antibody was diluted at 1:100 (4°, overnight). High-pressure and temperature Tris-EDTA, pH 8.0 was used for antigen retrieval. Negative control (right) obtained from antibody was pre-absorbed by immunogen peptide.

Citations

- [Deficient mismatch repair is detected in large-to-giant congenital melanocytic naevi: providing new insight into aetiology and diagnosis](#)

Please note: All products are 'FOR RESEARCH USE ONLY. NOT FOR USE IN DIAGNOSTIC OR THERAPEUTIC PROCEDURES'.