

# p70 S6 kinase $\beta$ Polyclonal Antibody

Catalog # AP71742

## Product Information

---

<b>Application</b>	WB, IHC-P, IF, ICC, E
<b>Primary Accession</b>	<a href="#">Q9UBS0</a>
<b>Reactivity</b>	Human, Mouse
<b>Host</b>	Rabbit
<b>Clonality</b>	Polyclonal
<b>Calculated MW</b>	53455

## Additional Information

---

<b>Gene ID</b>	6199
<b>Other Names</b>	RPS6KB2; STK14B; Ribosomal protein S6 kinase beta-2; S6K-beta-2; S6K2; 70 kDa ribosomal protein S6 kinase 2; P70S6K2; p70-S6K 2; S6 kinase-related kinase; SRK; Serine/threonine-protein kinase 14B; p70 ribosomal S6 kinase beta; S6K-beta; p70
<b>Dilution</b>	WB~~Western Blot: 1/500 - 1/2000. Immunohistochemistry: 1/100 - 1/300. ELISA: 1/5000. Not yet tested in other applications. IHC-P~~N/A IF~~1:50~200 ICC~~N/A E~~N/A
<b>Format</b>	Liquid in PBS containing 50% glycerol, 0.5% BSA and 0.09% (W/V) sodium azide.
<b>Storage Conditions</b>	-20°C

## Protein Information

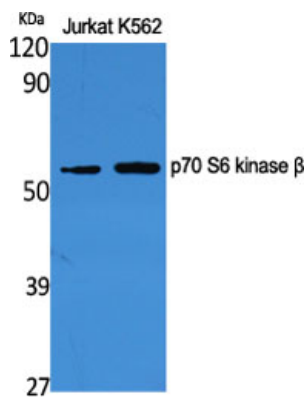
---

<b>Name</b>	RPS6KB2
<b>Synonyms</b>	STK14B
<b>Function</b>	Phosphorylates specifically ribosomal protein S6 (PubMed: <a href="#">29750193</a> ). Seems to act downstream of mTOR signaling in response to growth factors and nutrients to promote cell proliferation, cell growth and cell cycle progression in an alternative pathway regulated by MEAK7 (PubMed: <a href="#">29750193</a> ).
<b>Cellular Location</b>	Cytoplasm. Nucleus.

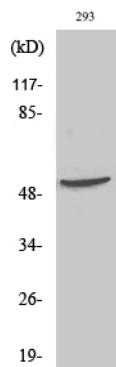
## Background

---

Phosphorylates specifically ribosomal protein S6.



Western Blot analysis of various cells using p70 S6 kinase  $\beta$  Polyclonal Antibody



Western Blot analysis of 293 cells using p70 S6 kinase  $\beta$  Polyclonal Antibody

Please note: All products are 'FOR RESEARCH USE ONLY. NOT FOR USE IN DIAGNOSTIC OR THERAPEUTIC PROCEDURES'.