

NDUFB9 Polyclonal Antibody

Catalog # AP71197

Product Information

Application	WB, IHC-P, IF, ICC, E
Primary Accession	Q9Y6M9
Reactivity	Human, Rat, Mouse
Host	Rabbit
Clonality	Polyclonal
Calculated MW	21831

Additional Information

Gene ID	4715
Other Names	NDUFB9; LYRM3; UQOR22; NADH dehydrogenase [ubiquinone] 1 beta subcomplex subunit 9; Complex I-B22; CI-B22; LYR motif-containing protein 3; NADH-ubiquinone oxidoreductase B22 subunit
Dilution	WB~~Western Blot: 1/500 - 1/2000. Immunohistochemistry: 1/100 - 1/300. ELISA: 1/10000. Not yet tested in other applications. IHC-P~~N/A IF~~1:50~200 ICC~~N/A E~~N/A
Format	Liquid in PBS containing 50% glycerol, 0.5% BSA and 0.09% (W/V) sodium azide.
Storage Conditions	-20°C

Protein Information

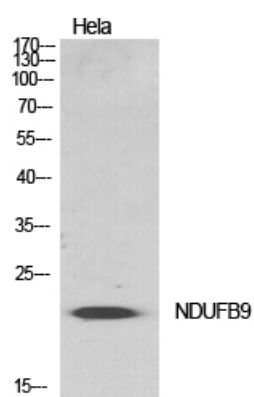
Name	NDUFB9
Synonyms	LYRM3, UQOR22
Function	Accessory subunit of the mitochondrial membrane respiratory chain NADH dehydrogenase (Complex I), that is believed to be not involved in catalysis. Complex I functions in the transfer of electrons from NADH to the respiratory chain. The immediate electron acceptor for the enzyme is believed to be ubiquinone.
Cellular Location	Mitochondrion inner membrane; Peripheral membrane protein; Matrix side

Background

Accessory subunit of the mitochondrial membrane respiratory chain NADH dehydrogenase (Complex I), that is believed to be not involved in catalysis. Complex I functions in the transfer of electrons from NADH to

the respiratory chain. The immediate electron acceptor for the enzyme is believed to be ubiquinone.

Images



Western Blot analysis of various cells using NDUF9
Polyclonal Antibody diluted at 1 : 500



Western Blot analysis of 293 cells using NDUF9
Polyclonal Antibody diluted at 1 : 500

Please note: All products are 'FOR RESEARCH USE ONLY. NOT FOR USE IN DIAGNOSTIC OR THERAPEUTIC PROCEDURES'.