

# MYH14 Polyclonal Antibody

Catalog # AP71116

## Product Information

---

<b>Application</b>	WB, IHC-P
<b>Primary Accession</b>	<a href="#">Q7Z406</a>
<b>Reactivity</b>	Human, Mouse
<b>Host</b>	Rabbit
<b>Clonality</b>	Polyclonal
<b>Calculated MW</b>	227871

## Additional Information

---

<b>Gene ID</b>	79784
<b>Other Names</b>	MYH14; KIAA2034; FP17425; Myosin-14; Myosin heavy chain 14; Myosin heavy chain; non-muscle IIC; Non-muscle myosin heavy chain IIC; NMHC II-C
<b>Dilution</b>	WB~~Western Blot: 1/500 - 1/2000. Immunohistochemistry: 1/100 - 1/300. ELISA: 1/5000. Not yet tested in other applications. IHC-P~~N/A
<b>Format</b>	Liquid in PBS containing 50% glycerol, 0.5% BSA and 0.09% (W/V) sodium azide.
<b>Storage Conditions</b>	-20°C

## Protein Information

---

<b>Name</b>	MYH14
<b>Synonyms</b>	KIAA2034
<b>Function</b>	Cellular myosin that appears to play a role in cytokinesis, cell shape, and specialized functions such as secretion and capping.
<b>Tissue Location</b>	High levels of expression are found in brain (highest in corpus callosum), heart, kidney, liver, lung, small intestine, colon and skeletal muscle. Expression is low in organs composed mainly of smooth muscle, such as aorta, uterus and urinary bladder. No detectable expression is found in thymus, spleen, placenta and lymphocytes.

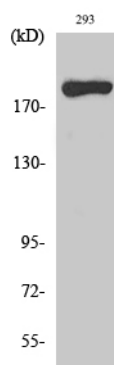
## Background

---

Cellular myosin that appears to play a role in cytokinesis, cell shape, and specialized functions such as secretion and capping.

## Images

---



Western Blot analysis of various cells using MYH14  
Polyclonal Antibody diluted at 1 : 1000

Please note: All products are 'FOR RESEARCH USE ONLY. NOT FOR USE IN DIAGNOSTIC OR THERAPEUTIC PROCEDURES'.