

# MRP-S35 Polyclonal Antibody

Catalog # AP71072

## Product Information

---

<b>Application</b>	WB, IHC-P, IF, ICC, E
<b>Primary Accession</b>	<a href="#">P82673</a>
<b>Reactivity</b>	Human, Rat, Mouse
<b>Host</b>	Rabbit
<b>Clonality</b>	Polyclonal
<b>Calculated MW</b>	36844

## Additional Information

---

<b>Gene ID</b>	60488
<b>Other Names</b>	MRPS35; MRPS28; HDCMD11P; MDS023; PSEC0213; 28S ribosomal protein S35; mitochondrial; MRP-S35; S35mt; 28S ribosomal protein S28, mitochondrial; MRP-S28; S28mt
<b>Dilution</b>	WB~~Western Blot: 1/500 - 1/2000. Immunohistochemistry: 1/100 - 1/300. ELISA: 1/40000. Not yet tested in other applications. IHC-P~~N/A IF~~1:50~200 ICC~~N/A E~~N/A
<b>Format</b>	Liquid in PBS containing 50% glycerol, 0.5% BSA and 0.09% (W/V) sodium azide.
<b>Storage Conditions</b>	-20°C

## Protein Information

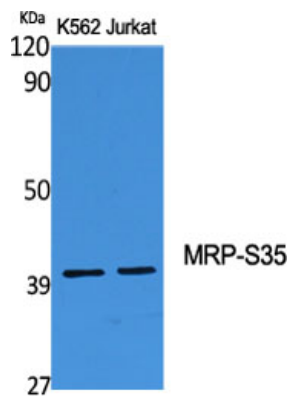
---

<b>Name</b>	MRPS35 ( <a href="#">HGNC:16635</a> )
<b>Cellular Location</b>	Mitochondrion.

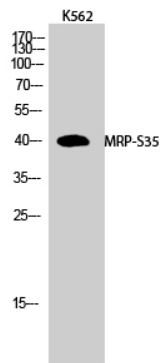
## Images

---

Western Blot analysis of various cells using MRP-S35 Polyclonal Antibody



Western Blot analysis of K562 cells using MRP-S35 Polyclonal Antibody



Please note: All products are 'FOR RESEARCH USE ONLY. NOT FOR USE IN DIAGNOSTIC OR THERAPEUTIC PROCEDURES'.