

MMP-1 Polyclonal Antibody

Catalog # AP70975

Product Information

Application	WB, IHC-P, IF, ICC, E
Primary Accession	P03956
Reactivity	Human, Rat, Mouse
Host	Rabbit
Clonality	Polyclonal
Calculated MW	54007

Additional Information

Gene ID	4312
Other Names	MMP1; CLG; Interstitial collagenase; Fibroblast collagenase; Matrix metalloproteinase-1; MMP-1
Dilution	WB~~Western Blot: 1/500 - 1/2000. Immunohistochemistry: 1/100 - 1/300. Immunofluorescence: 1/200 - 1/1000. ELISA: 1/20000. Not yet tested in other applications. IHC-P~~N/A IF~~1:50~200 ICC~~N/A E~~N/A
Format	Liquid in PBS containing 50% glycerol, 0.5% BSA and 0.09% (W/V) sodium azide.
Storage Conditions	-20°C

Protein Information

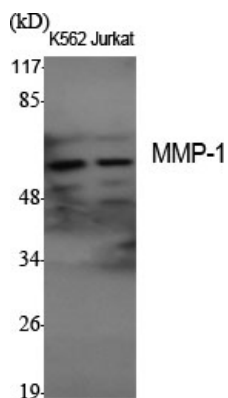
Name	MMP1
Synonyms	CLG
Function	Cleaves collagens of types I, II, and III at one site in the helical domain. Also cleaves collagens of types VII and X (PubMed: 1645757 , PubMed: 2153297 , PubMed: 2557822). In case of HIV infection, interacts and cleaves the secreted viral Tat protein, leading to a decrease in neuronal Tat's mediated neurotoxicity (PubMed: 16807369).
Cellular Location	Secreted, extracellular space, extracellular matrix

Background

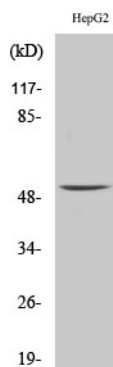
Cleaves collagens of types I, II, and III at one site in the helical domain. Also cleaves collagens of types VII and X (PubMed:[2557822](#), PubMed:[2153297](#), PubMed:[1645757](#)). In case of HIV infection, interacts and cleaves the secreted viral Tat protein, leading to a decrease in neuronal Tat's mediated neurotoxicity

(PubMed:[16807369](#)).

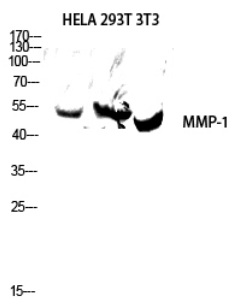
Images



Western Blot analysis of various cells using MMP-1 Polyclonal Antibody diluted at 1 : 1000



Western Blot analysis of HepG2 cells using MMP-1 Polyclonal Antibody diluted at 1 : 1000



Western blot analysis of HELA 293T 3T3 lysis using MMP-1 antibody. Antibody was diluted at 1:1000

Please note: All products are 'FOR RESEARCH USE ONLY. NOT FOR USE IN DIAGNOSTIC OR THERAPEUTIC PROCEDURES'.